

# 2020 Lower James River Proposed Shell Plants

Upper Thomas  
37.01949  
76.48765

Upper Brown  
37.01475  
76.48043

Lower Brown Shoal  
37.01221  
76.46833

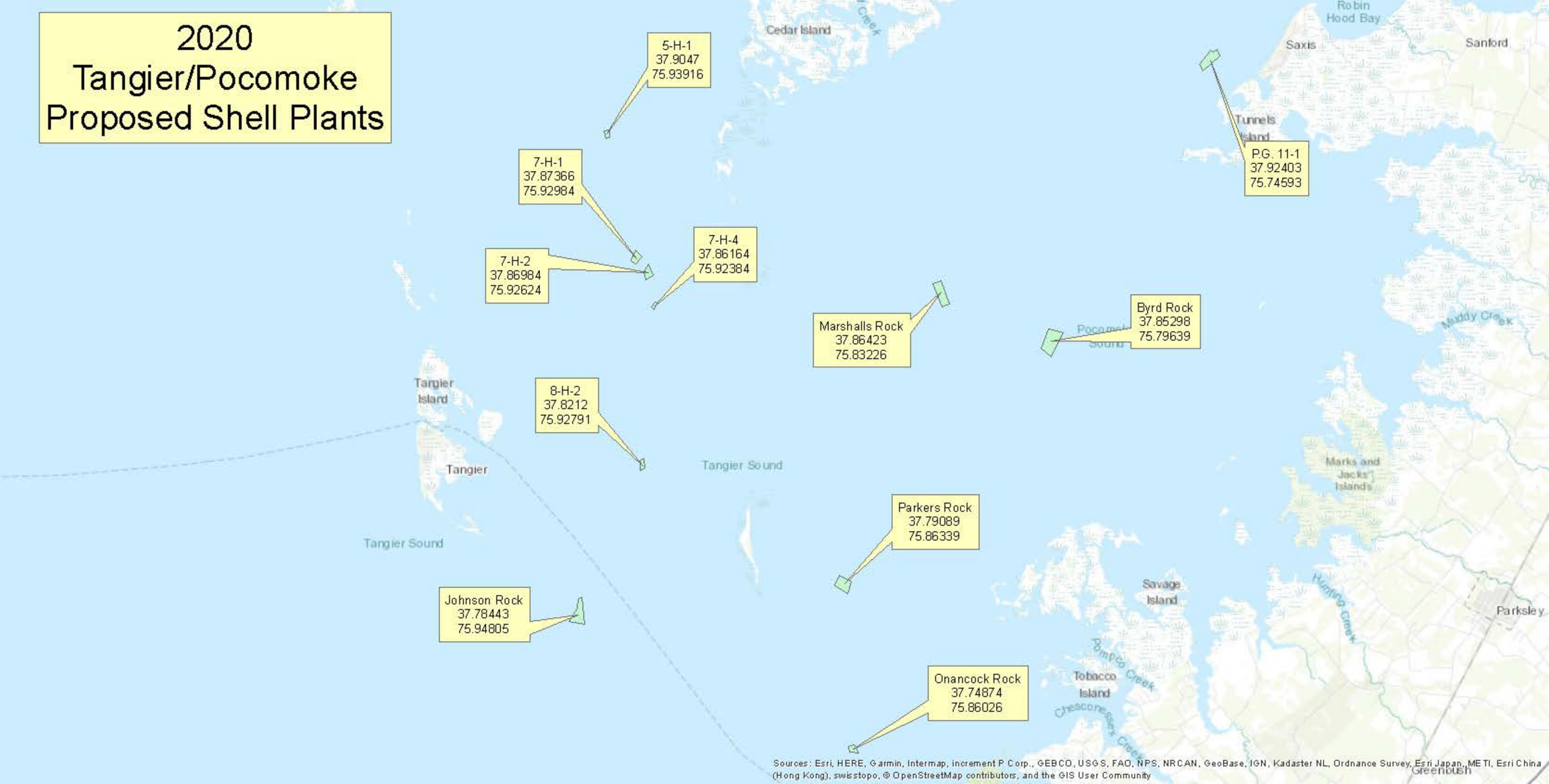
Nansemond Ridge  
36.95655  
76.45761

Nansemond Ridge 2017  
36.01483  
76.48061

Sources: Esri, HERE, Garmin, Intermap, increment P Corp., GEBCO, USGS, FAO, NPS, NRCAN, GeoBase, IGN, Kadaster NL, Ordnance Survey, Esri Japan, METI, Esri China (Hong Kong), swisstopo, © OpenStreetMap contributors, and the GIS User Community

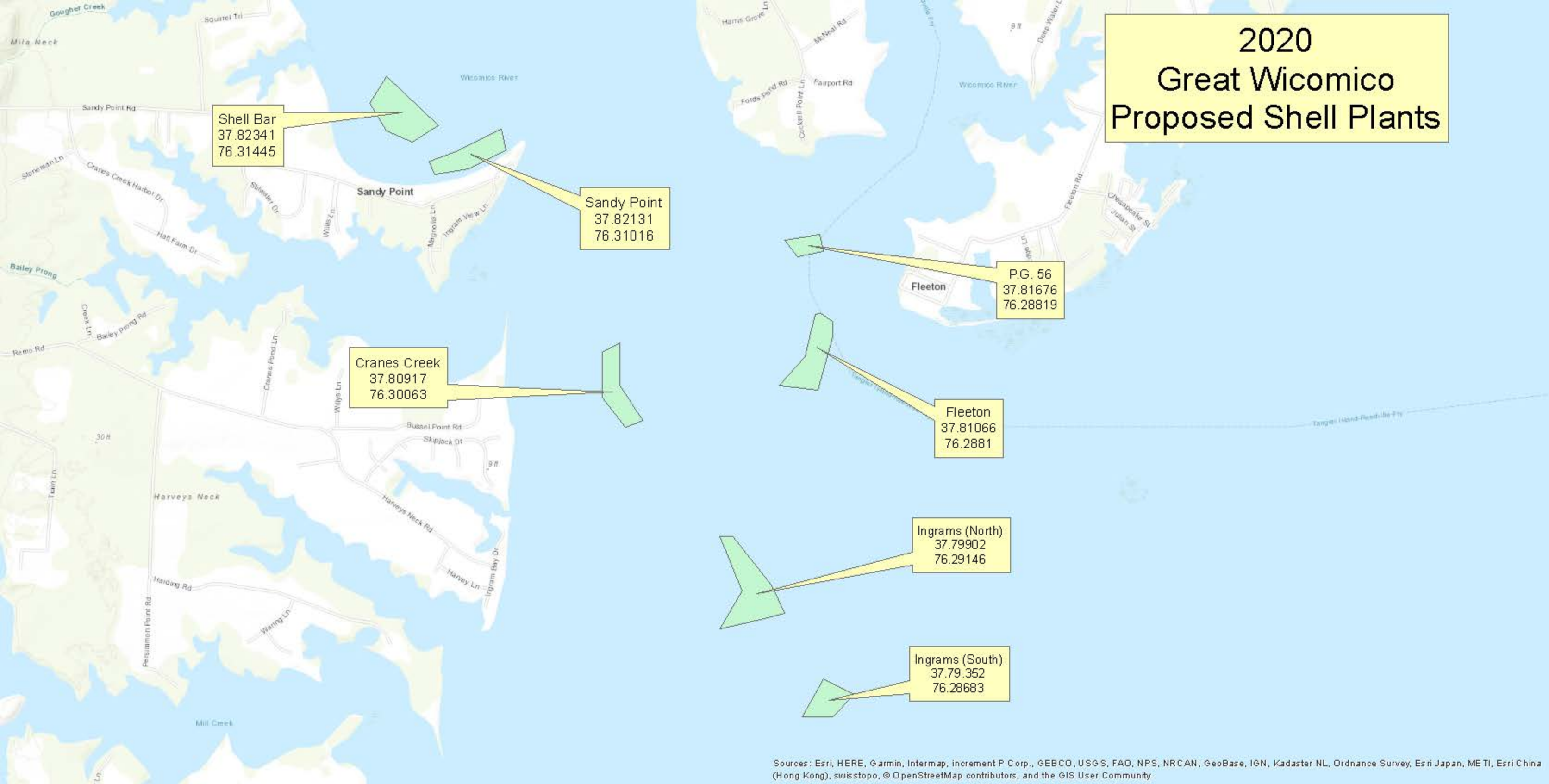


# 2020 Tangier/Pocomoke Proposed Shell Plants



Sources: Esri, HERE, Garmin, Intermap, increment P Corp., GEBCO, USGS, FAO, NPS, NRCAN, GeoBase, IGN, Kadaster NL, Ordnance Survey, Esri Japan, METI, Esri China (Hong Kong), swisstopo, © OpenStreetMap contributors, and the GIS User Community

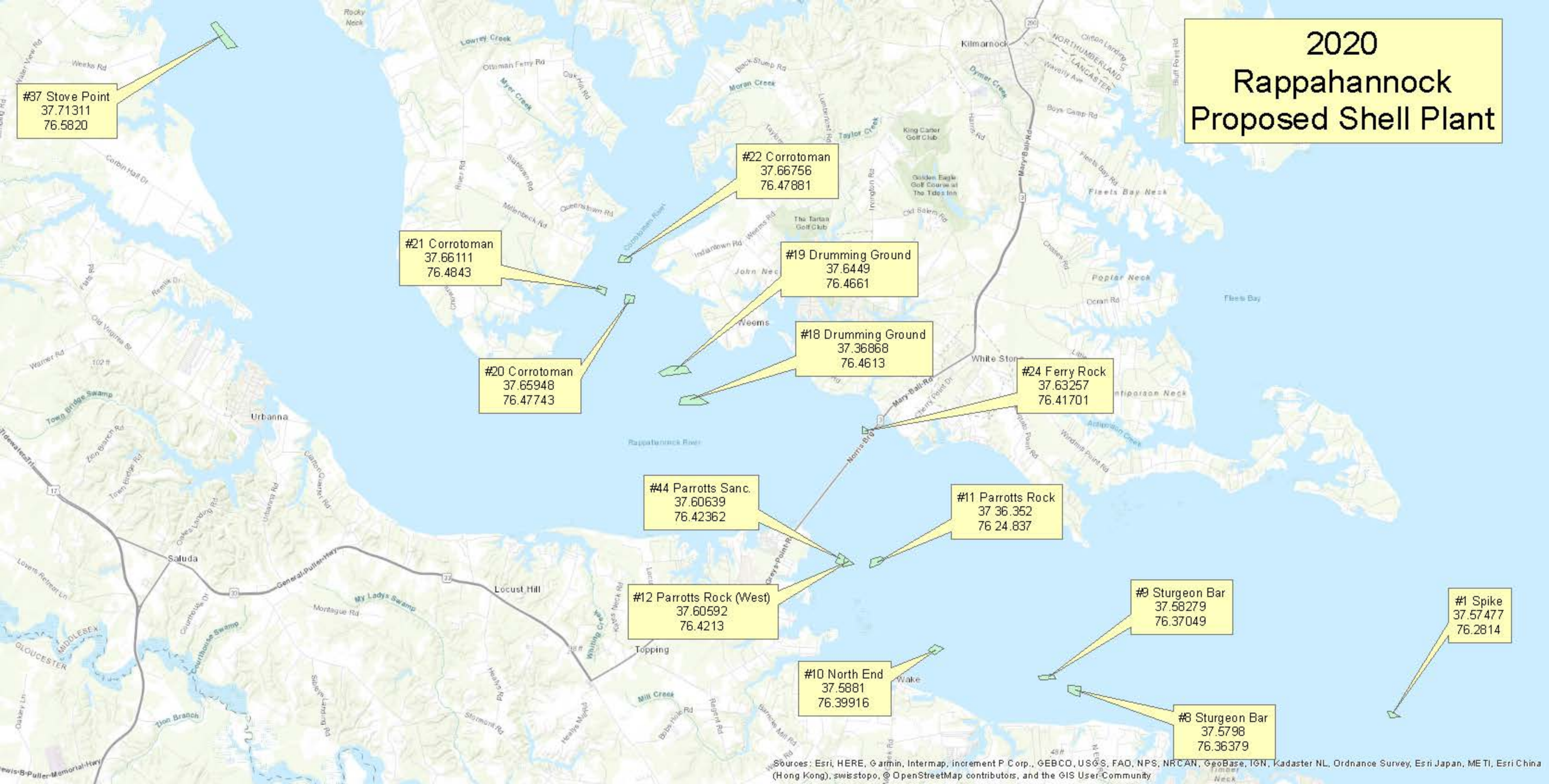
# 2020 Great Wicomico Proposed Shell Plants



Sources: Esri, HERE, Garmin, Intermap, increment P Corp., GEBCO, USGS, FAO, NPS, NRCAN, GeoBase, IGN, Kadaster NL, Ordnance Survey, Esri Japan, METI, Esri China (Hong Kong), swisstopo, © OpenStreetMap contributors, and the GIS User Community



# 2020 Rappahannock Proposed Shell Plant



Sources: Esri, HERE, Garmin, Intermap, increment P Corp., GEBCO, USGS, FAO, NPS, NRCAN, GeoBase, IGN, Kadaster NL, Ordnance Survey, Esri Japan, METI, Esri China (Hong Kong), swisstopo, © OpenStreetMap contributors, and the GIS User Community



# 2020 Piankatank and Chesapeake Bay Proposed Shell Plants

#13 Island Bar  
37.53358  
76.38443

#2 Heron Rock  
37.52675  
76.34789

#3 Burton Point  
37.51409  
76.32729

Beverlys 1-4  
37.53065  
76.24963

Deep Rock 1-4  
37.50783  
76.24486



# 2020 York River Proposed Shell Plants

Timberneck 1-3  
37.27344  
76.53169

Sarah's Creek #1  
37.24260  
76.44405

Sarah's Creek #2  
37.24350  
76.47432



# 2020 Lower James River Proposed Shell Plants

Upper Thomas  
37.01949  
76.48765

Upper Brown  
37.01475  
76.48043

Lower Brown Shoal  
37.01221  
76.46833

Nansemond Ridge  
36.95655  
76.45761

Nansemond Ridge 2017  
36.01483  
76.48061

Sources: Esri, HERE, Garmin, Intermap, increment P Corp., GEBCO, USGS, FAO, NPS, NRCAN, GeoBase, IGN, Kadaster NL, Ordnance Survey, Esri Japan, METI, Esri China (Hong Kong), swisstopo, © OpenStreetMap contributors, and the GIS User Community



# Proposed Locations Elizabeth River Eastern Branch

