

# to buoy structures

Timothy A. Wivell  
 1944 Nu Lane  
 Cape Charles, VA. 23310  
 (757) 650-7313 cell (757) 678-5245

Location - Cherry Stone Creek

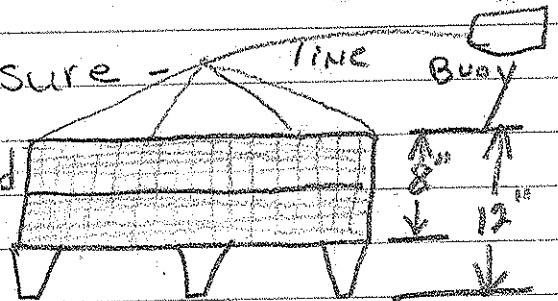
Plat File Number - 19609  
 19610

size - 36 acres

Maximum # of structures - Not more than 500.00

Detailed description of enclosure -

Tray Constructed  
 of Wire  
 Size 38 inch wide  
 44 inch Long  
 12 inch High

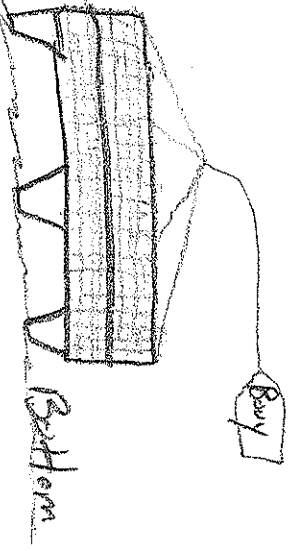


Trays will be placed in four to ten feet of water

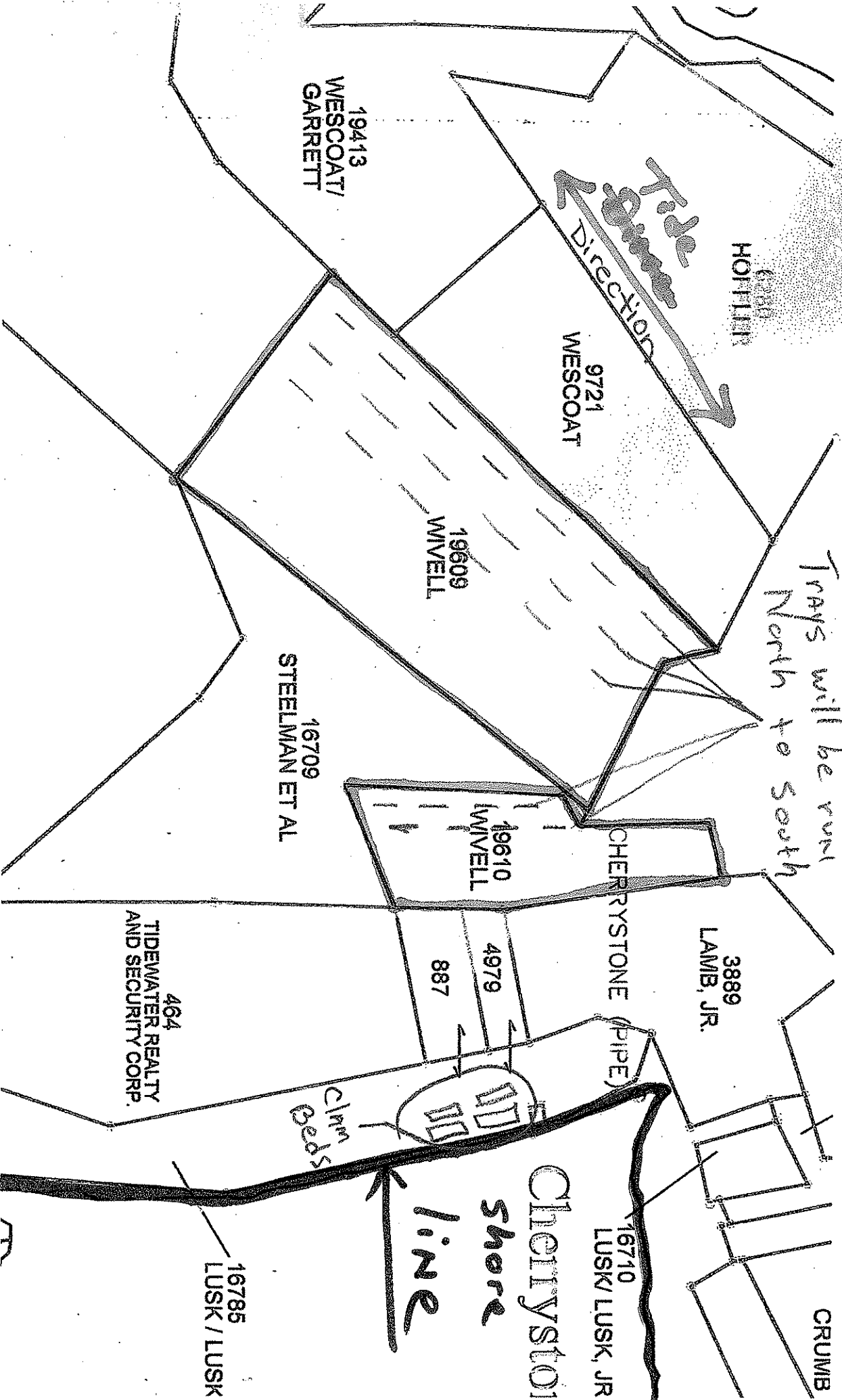
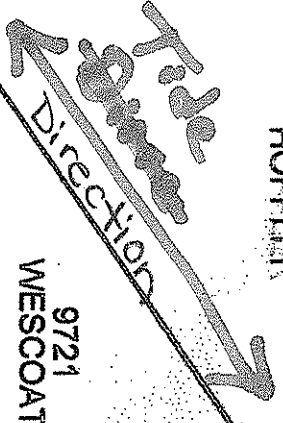
Species - Cultured Oysters

Area around lease - Open to the North South, and west. To the East there are clam beds, app. 600 ft inshore

Trays  
Size  
38 W  
44 L  
12 H



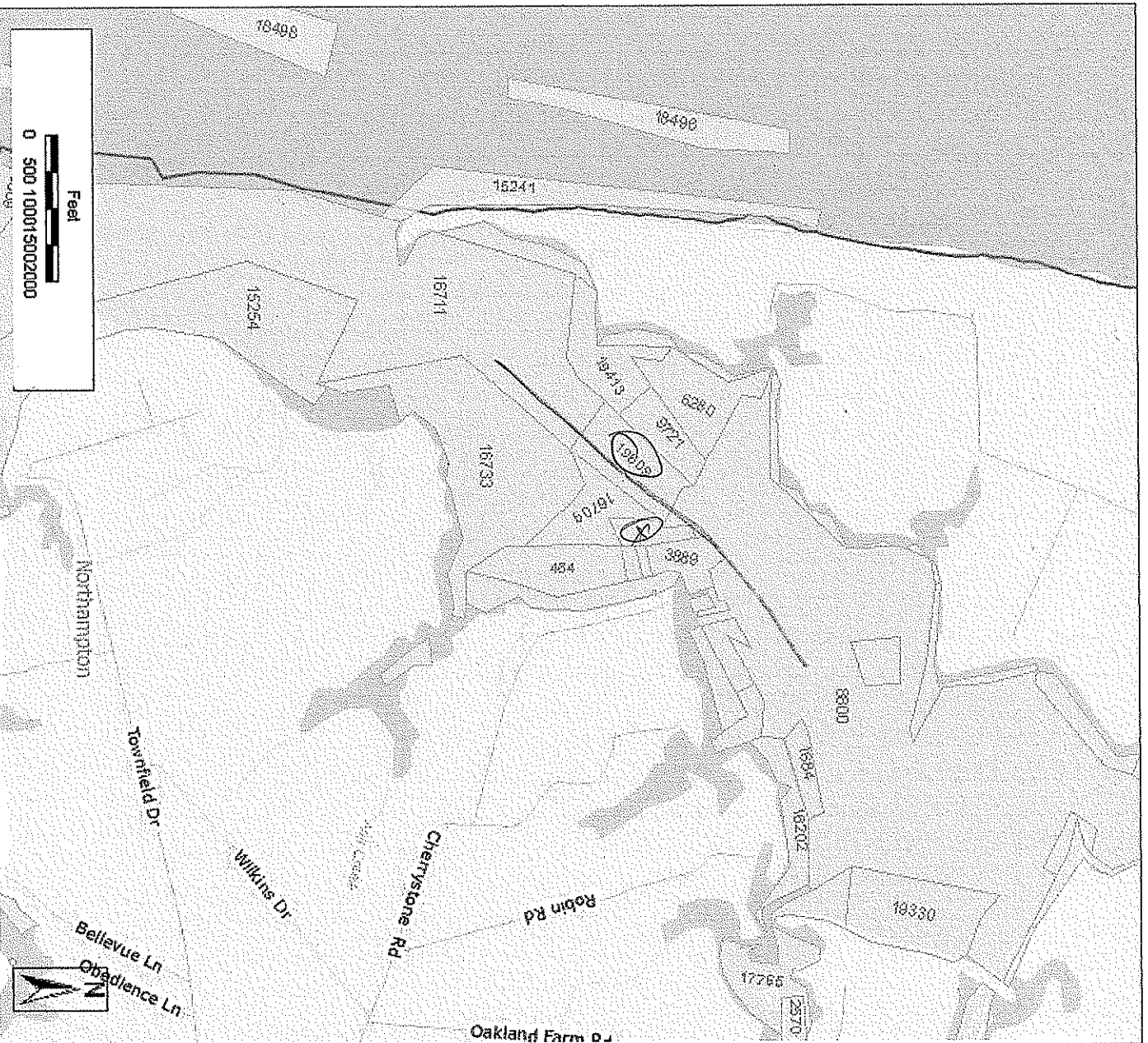
Trays will be run North to South





# Virginia Marine Resource Commission

- Legend**
- Places
  - Private



DISCLAIMER: This drawing is neither a legally recorded map nor a survey and is not intended to be used as such. The information displayed is a compilation of records, information, and data obtained from various sources, and the Virginia Marine Resource Commission is not responsible for its accuracy or how correct it may be.