



VMRC FISHERIES NEWS

This newsletter provides only a summary of management measures adopted by the Commission and has no legal force or effect. The purpose of this newsletter is to explore events and issues of interest to commercial fishermen, VMRC managers, Law Enforcement, researchers, and the Commission.



Volume 19, Issue 1
Spring 2011

Inside this issue:

Tautog	2
Horseshoe Crab	2
Spiny Dogfish	3
Striped Bass	3
Shellfish	4-5
Blue Crab Updates	6-11
1-800 Updates	12
Online Reporting	12
NC Quota Transfers	12
Charter Boat	13
Marine Products	14
Mandatory Harvest Reporting Guide	15-21
Non-Compliance	22-23

INSIDE THE SPRING 2011 ISSUE:

In this issue of the Virginia Marine Resources Commercial Fisheries Newsletter, you will be updated on recent decisions and rulemaking by the Commission. There are species-specific updates on many of our most popular fisheries, as well as an update on recent shellfish changes.

You will also find the results of the 2011 Bay-Wide Winter Dredge Survey (beginning on page 6) along with a few other blue crab updates and changes to the sanctuary.

There is also a note about the new 1-800-line option to hear up-to-date Commission actions, as well as information about online reporting op-

tions.

We have also included news about the recent North Carolina quota transfers for summer flounder and black sea bass.

Please note, we have included an updated Mandatory Harvest Reporting Guide to assist you will filling out your monthly reports. Please review this guide to ensure accurate and timely reporting!

We would like to thank all of the Virginia commercial watermen that actively participate in programs and meetings sponsored by the Commission. Have a great spring and summer!



We serve as stewards of the Commonwealth's marine and aquatic resources, and protectors of its tidal waters and homelands, for present and future generations.

SERVICE DEMANDS HAVE INCREASED

More permits and transfers are being processed than ever before. For that reason, it is our recommendation that you call prior to planning any trip to the Fisheries Management Division offices in Newport News to insure someone will be available to assist you with your item on that day. Fisheries staff members are working diligently to provide services as quickly as possible, however, staff resources and personnel are limited, and there will be some days that we may not be able to directly assist you with a specific problem until a later time or date. Please help us in helping you. Thank you for your consideration.

This newsletter provides only a summary of management measures adopted by the Commission and has no legal force or effect. Please refer to the actual regulation for legal documentation.

TAUTOG UPDATE

During the March 2011 meeting of the Atlantic States Marine Fisheries Commission, the Tautog Management Board approved Addendum VI to the Interstate Fishery Management Plan for Tautog in response to the latest scientific advice that the stock continues to be overfished with overfishing occurring. In order to end overfishing and initiate stock rebuilding, Addendum VI lowers the F target to 0.15 and requires states to implement measures to

achieve a 56% reduction in exploitation by January 1, 2012. Addendum VI requires all states to prohibit the possession of undersized tautog in excess of possession limits. The measure is intended to deter illegal harvest of tautog for the live market.

The VMRC will present this issue to the Finfish Management Advisory Committee during the 2nd half of 2011 and to the Commission before December 2011.

CHANGES TO HORSESHOE CRAB REGULATIONS

VMRC staff met with horseshoe crab industry members twice this spring to discuss modifications to the fishery to allow for better quota tracking and allotment of quota between user groups. Based on those meetings, staff proposed several modifications that were approved by the Commission at the April 26, 2011 public hearing.

The 2011 state-wide horseshoe crab quota is 130,933 horseshoe crabs. This reduced quota will pay back overages from both 2009 and 2010.

Effective May 1, 2011, horseshoe crab harvesters are required to call in their daily landings. Harvesters with unrestricted and restricted endorsement licenses must call the VMRC law enforcement operations office (1-800-541-4646), and harvesters with horseshoe crab bycatch permits (including hand harvesters) must call the VMRC Interactive Voice Response (IVR) system (1-800-937-9247).

Landing limits were also lowered for both unrestricted and restricted endorsement licenses by 50%. The new daily landing limits are 2,500 horseshoe crabs, per day, for unrestricted endorsement licensees, and 1,000 horseshoe crabs, per day, for restricted endorsement licensees. Effective May 1, 2011, a moratorium for new horseshoe crab licenses and permits was enacted by the Commission to better manage into the horseshoe crab fishery quota.

The Commission also established a control date of December 31, 2010 to serve as a basis for any future horseshoe crab management decisions.

Historical landings by gear type were analyzed to determine a quota allocation scheme by gear type. These data, combined with input from members of the horseshoe crab industry, were used to determine the following allocation for the annual quota: 42% for dredge gears, 13% for trawl gears, 23% for hand harvester licenses, and 22% for pound net and other gear (see table).

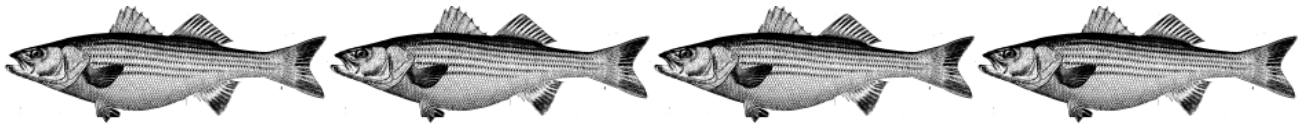
Gear Type	2011 (reduced quota)	Full Quota Year
Dredge Gear (42%)	54,992	64,048
Trawl Gear (13%)	17,021	19,824
Hand Harvest (23%)	30,115	35,074
Pound net/Other (22%)	28,805	33,549
Sum (number of hsc)	130,933	152,495

Additionally, during the April 26, 2011 public hearing, the Commission approved a public request that allows two horseshoe crab bycatch permits to be on board the same vessel, and thereby be allowed to possess and land no more than 1,000 horseshoe crabs per vessel per day.

SPINY DOGFISH

During the March 2011 meeting of the Atlantic States Marine Fisheries Commission, the Spiny Dogfish and Coastal Sharks Management Board approved Addendum III to the Spiny Dogfish Fishery Management Plan. The Addendum divides the southern region annual quota of 42% of a coastwide quota of 20 million pounds into state-specific shares. It also allows for quota transfers between states, rollovers of up to five percent,

state-specified possession limits, and a three-year reevaluation of the measures. The addendum's provisions apply only to states in the southern region (New York to North Carolina) and do not modify the northern region allocation. Virginia was allocated 10.795% of the annual coastwide quota, equaling 2,159,000 pounds for the May 1, 2011 through April 30, 2012 fishing season.



STRIPED BASS

During the March 2011 meeting of the Atlantic States Marine Fisheries Commission, the Atlantic Striped Bass Management Board initiated development of Draft Addendum III with the goals of reducing striped bass fishing mortality (F) up to 40% and further protecting the spawning stock when it is concentrated and vulnerable. The addendum was initiated in order to allow state managers to promptly respond to the results of the stock assessment update in the fall of this year, if necessary. Provisions of the addendum, if passed, could be implemented prior to the start of the 2012 fishing year. The ASMFC Board's action is in response to recent trends in the fishery and resource, including a 66% decline in estimated recreational catch from 2006 through 2009; a 25% decline in estimated striped bass abundance from 2004 through 2008; and lowered recruitment in recent years. Additionally, states in the northern extent of the fishery (north of Virginia

and Maryland) have expressed concern over the decreased availability of striped bass as a result of the diminished water quality in the Chesapeake Bay during the summer months that may also contribute to increased prevalence of mycobacteriosis in striped bass. Provisions that could specifically impact Virginia's Chesapeake Bay and Coastal striped bass fisheries include reductions in the annual coastal commercial allocation, reduction in the recreational bag limits, revisions to the target F rate for the Chesapeake Bay, and reductions on fishing for striped bass in known spawning areas during the spawning season by 50%. The ASMFC Striped Bass Management Board will meet again in August to discuss this issue further. Until the stock assessment update is completed, and results provided, it is too soon to know if the 2012 commercial striped bass fishery in Virginia waters will be reduced or remain the same.



SHELLFISH UPDATES



WARM WATER HARVEST RESTRICTIONS FOR SHELLFISH

Regulation 4VAC20-1230-10, et seq., “Pertaining to Restrictions on Shellfish”

During the months of May through September, there are special shellfish harvest restrictions that are required by the U. S. Food and Drug Administration (FDA). These restrictions protect human health from water-borne pathogens that can grow when shellfish are subjected to warm temperatures after harvest. These restrictions apply to shellfish destined for human consumption, not to seed clams or seed oysters.

Shading on the boat is required for all shellfish. Shellfish should also be shaded while transported from the landing site to the processing plant. Hard clams have no daily time curfew, but must be transported from landing to a temperature controlled facility within 60 minutes.

Oyster harvest is more restrictive. From May 1 through June 14, all harvest must be completed and the oysters under refrigeration or covered by a layer of ice by 11:00 a.m. From June 15 through August 31, all harvest must be completed and oysters under refrigeration or covered by a layer of ice by 10:00 a.m. During September, all harvest must be completed and oysters under refrigeration or covered by a layer of ice by 12:00 noon.

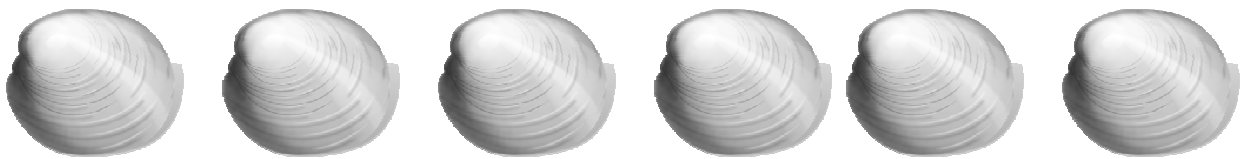
A harvester may work after these curfew times if he acquires a Virginia Marine Resources Commission (VMRC) approved Global Position System (GPS) tracking device. A harvester must also get a permit from the Conservation and Replenishment Department (CRD) for the GPS tracking device. Once this permit is acquired, a harvester may harvest oysters at any time during the day for a total time period of no more than five hours from the time of leaving the dock until returning to the dock. Oyster aquaculturists may also perform normal husbandry activities for oysters at all times of the day if an Oyster Aquaculture Husbandry Permit is obtained from the CRD (757-247-2121).

In the James River, there is an experimental program to allow oyster harvesters to work more than five hours if they have a Virginia Department of Health-Division of Shellfish Sanitation (VDH-DSS) approved box on board their boat that can hold oysters. Oysters in the box must be continuously covered by a layer of ice during the entire harvesting period. If this program works well during the warm weather months, it may be expanded to other areas of the Commonwealth.

SHELLFISH TAGGING

Regulation 4VAC 20-1250-10, et seq., “Pertaining to the Tagging of Shellfish”

All harvesters are required to place a waterproof tag on all shellfish harvested in Virginia, whether harvest is from public or private shellfish ground. These tags are required by the FDA. A harvester can use their own VDH- DSS approved tags or generic tags are available from the VMRC Licensing Agents. The waterproof tag should be placed on the shellfish harvest as soon as possible after leaving a harvest area. If harvesters work on more than one harvest area, separate tags must be prepared for each area. Harvest from private ground usually requires a “bulk” tag, when the entire boat load can be tagged with a single waterproof tag. “Harvester” tags are generally used for oysters harvested from public ground.



OYSTER HARVEST REPORTING

Regulation 4VAC 20-200-10, et seq., “Pertaining to the Requirements for Reporting Oyster Transactions and Payment of Taxes” and Regulation 4VAC 20-610-10, et seq., “Pertaining to Commercial Fishing and Mandatory Harvest Reporting”

There continues to be confusion on oyster harvest reporting. Oysters must be reported in two systems. All oyster harvesters, whether on public or private ground, wild harvests or aquaculture, should be completing a monthly report for the mandatory reporting system. These forms can be obtained from the Department of Plans and Statistics (757-247-2241). All oyster harvesters that market their own product must also report monthly in the oyster buyer reporting system where taxes are due on all harvest. All oyster buyers must report in the oyster tax reporting system. Reporting forms for this system are available from the Department of Conservation and Replenishment (757-247-2121). Accurate and timely oyster harvest reporting is critical to getting funding for oyster restoration in the future.

RESULTS FROM THE 2011 BAY-WIDE WINTER DREDGE SURVEY

This survey has been conducted during the December–March period by VIMS and the Maryland Department of Natural Resources since 1989-90. Results from the 2011 Bay-wide Winter Dredge survey are shown in Figures 1 - 4. Figure 1 indicates that 2011 total abundance (male and female crabs, combined) declined by 30% from the 2010 value. The total abundance of 460 million crabs consists of recruits (termed age-0 crabs), as well as spawning-age crabs (termed age 1+ crabs). Spawning-age crabs have the potential to spawn either in spring or late summer of 2011. Of the total 2011 abundance, 207 million were age-0 crabs (crabs less than 2.4 inches in carapace width) and 254 million were age-1+ crabs (crabs more

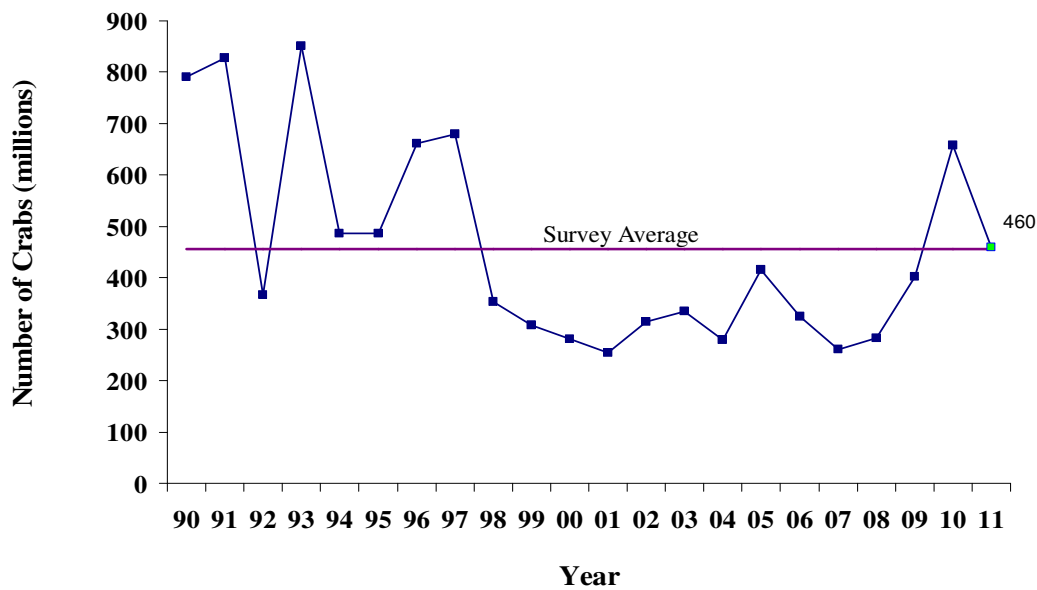


2010-2011 Bay wide Winter Blue Crab Dredge Survey



Figure 1. Total Number of Crabs Estimated to be in Chesapeake Bay

Total abundance declined in 2011 due to lower reproduction and high winter mortality



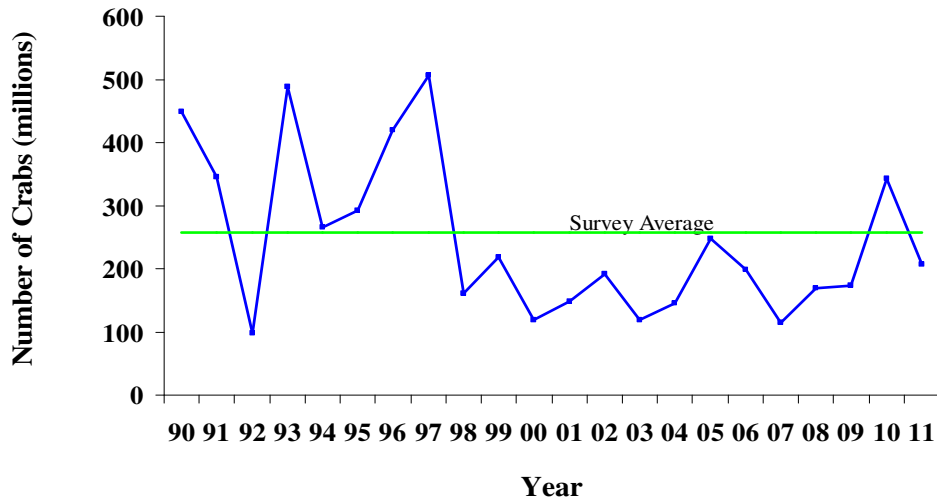
than 2.4 inches in carapace width).

Figure 2 (page 7) indicates the number of recruits in 2011 was below the survey average. Figure 3 (page 7) shows the abundance of spawning-age crabs in 2011 exceeded the interim target of 200 million crabs, as in 2010 and 2009. Figure 4 (page 8) provides the annual percentage of the bay-wide stock removed by fisheries, compared to the target (46%) and maximum safe level of removal (53%). The trend in removals is encouraging because the last 3 years' removals were near or below the target, and that result has not occurred since 1996-97. Also encouraging is that the commercial harvest has increased by 53% from 2008,



2010-2011 Bay wide Winter Blue Crab Dredge Survey

Figure 2. Number of Juvenile Crabs Estimated to be in Chesapeake Bay



2010-2011 Bay wide Winter Blue Crab Dredge Survey

Figure 3. Number of Spawning-Age Crabs Estimated to be in Chesapeake Bay

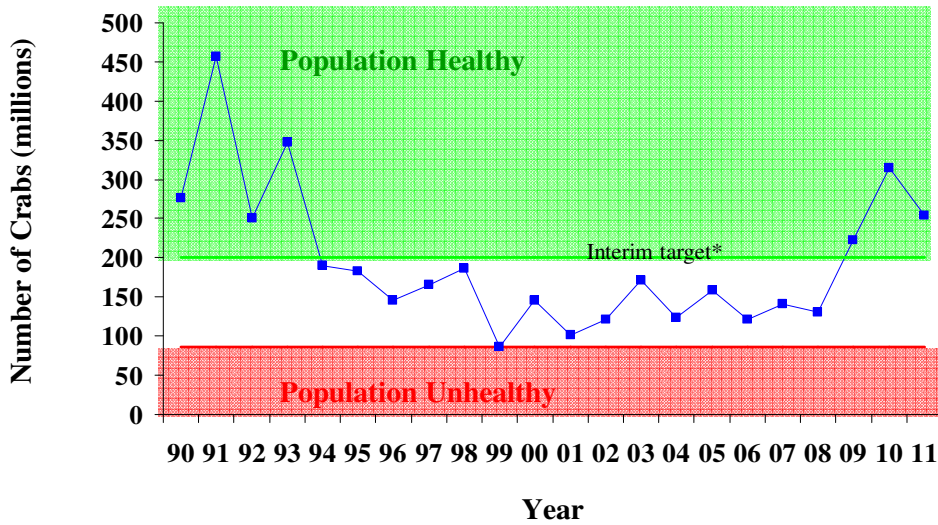
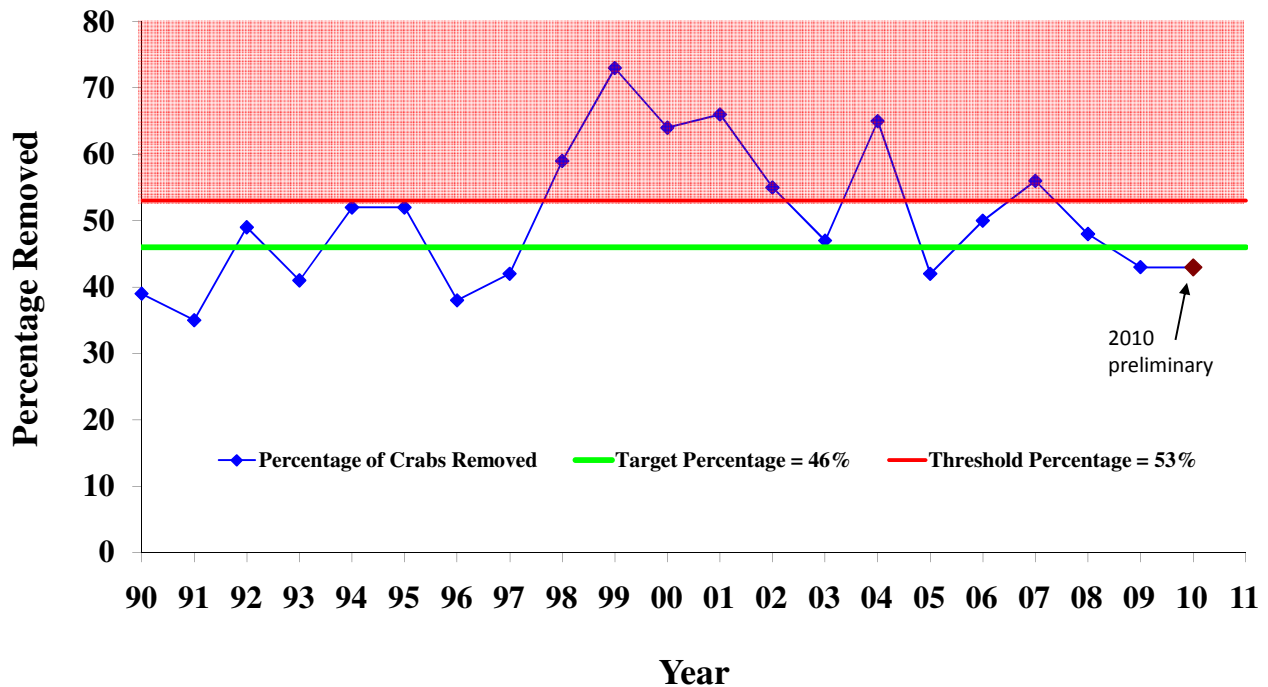




Figure 4. The Annual Percentage of Crabs Removed from the Bay Compared to the Target Level of 46% and the Maximum Safe Level of 53%.



Overfishing of the blue crab stock has not occurred since 2007. The 2010 exploitation rate was 43%, meaning that 43% of the total abundance was removed by the bay-wide fisheries (Figure 4). It is extremely important that the removal rates the last three years have been near or below the exploitation target of 46%.

The 2011 abundance of recruits, although less than the previous year, ranked the eighth highest of the 22-year winter dredge survey and was average for the Bay-wide Winter Dredge Survey. These age-0 crabs will recruit to the fisheries in late summer to fall, so it is important to note that 2011 fall harvest could be less than in 2010.

Figure 3 (page 7) shows that the age-1+ abundance has exceeded the interim target of 200 million age-1+ crabs for the third consecutive year. One reason for the decline in recruits in

2011 is due to the extent of the overwintering kill, which averaged 13.7% on a bay-wide basis. This change in overwintering mortality in 2011 from 2010 represents a 24% increase, as the 2010 overwintering mortality was 11%. The decline in age-1+ abundance in 2011, compared to 2010, was 19%.

Three years of abundance of the potential spawners that exceeded the interim target, but only a one-year spike in recruits (2010), indicate that the stock is still in a rebuilding mode. It is encouraging that the interim target for age-1 and older crabs has been exceeded three years in a row, but that is just an interim target that was chosen by the Chesapeake Bay Stock Assessment Committee, on the basis that 200 million age-1 and older crabs in a given year seemed to promote adequate recruitment. By this summer (2011), it is expected that the third peer-reviewed analytical stock assessment of blue crab will recommend a more conservative female-only target. That does not mean that the general increases in harvest and abundance will be compromised. However, it does mean that continuation of the management measures from 2010 (as shown below in Table 1), initially implemented in 2008, is extremely important to the stability of this valuable resource. In turn, it is expected that in 2012 the conservation of female crabs will increase in importance.

Table 1. Virginia's 2010 commercial crabbing regulations as they pertain to harvest of female blue crabs

Measure	Applicable Dates	Details
CRSP (Cull Ring, Sanctuary, Peeler Minimum Size Limit)		
Cull Ring	Mar 17–Nov 20	Add 2-3/8" cull rings in main stem bay & tributaries
Peeler Minimum Size Limit	Mar 17–Jul 15	3.25" minimum size applies to Virginia tidal waters
	Jul 16–Nov 20	3.50" minimum size applies to main stem bay & tributaries, including Potomac tributaries to Virginia
All sanctuaries *	May 1–Sep 15	Month of May closed for first time
Season Limit—Females	Nov 21–Nov 30	Prohibit harvest of female blue crabs
Closure of Crab Dredge Fishery	Dec 1, 2010– Mar 31, 2011	

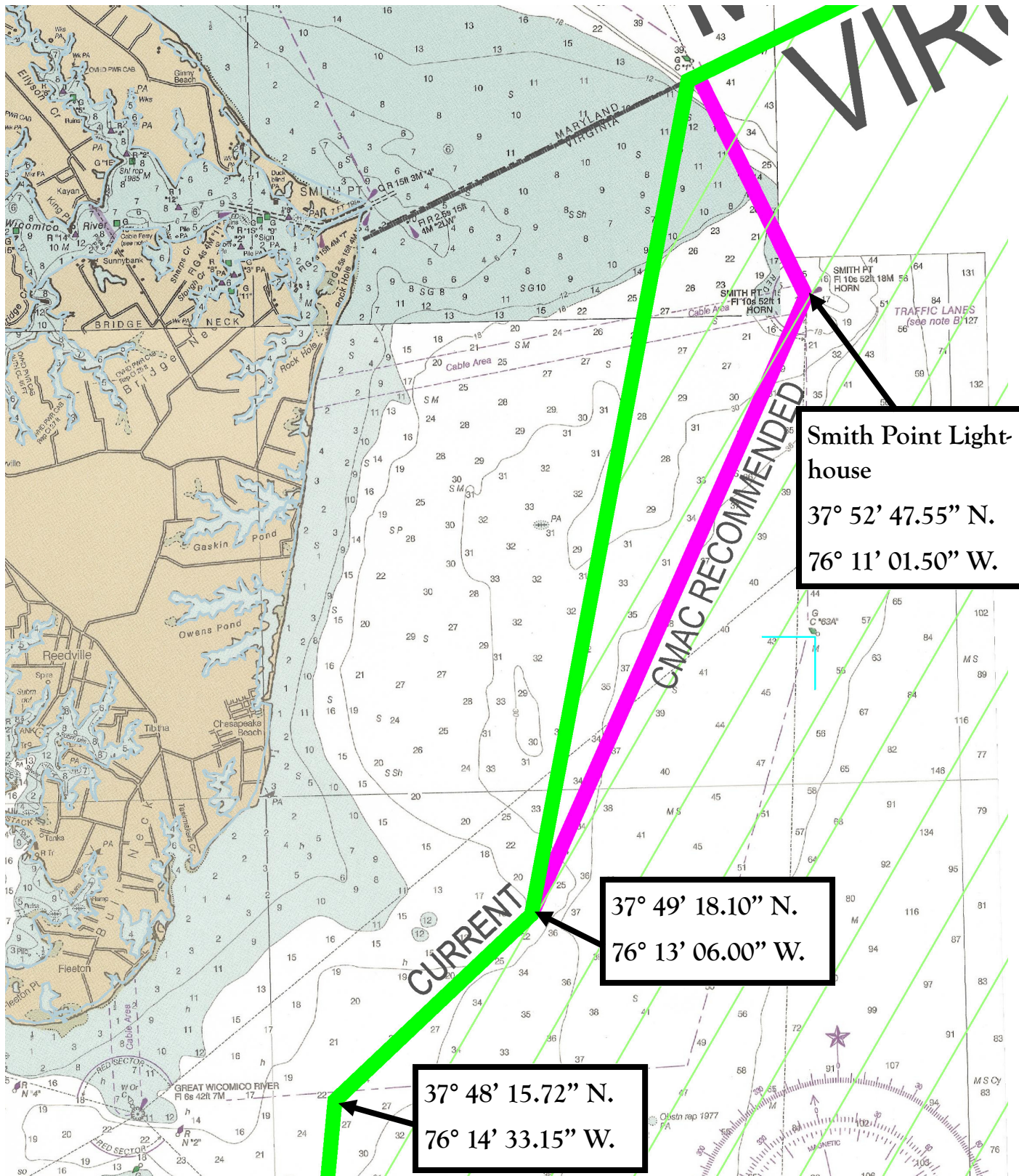
* The blue crab sanctuary dates for 2011 have been modified. See page 10 for more details.

Amendments to Blue Crab Sanctuary Boundary and Closure Date

At the April 26, 2011, Marine Resources Commission meeting, the Commission voted unanimously to amend Regulation 4VAC20-752-10 et seq., modifying the boundary and closure date of the Blue Crab Sanctuary. The Commission approved a modest modification of the sanctuary boundary line of Area 1 that extends offshore from Smith Point to the Great Wicomico River (see graph, page 11). This modified boundary extends from the Green Can Buoy on the Maryland-Virginia line, thence southeast to Smith Point Light, thence southwest to the current boundary line in this area. Overall, the amended boundary line (labeled 'CMAC RECOMMENDED' on the graph, page 11), was endorsed by the Crab Management Advisory Committee, and provides greater depth outside of the boundary line for crab harvesting activities, at a time when the sanctuary is closed to harvest. This change is not expected to impede the migration of female crabs. Additionally, the Commission approved modifying the start date of the sanctuary closure, from May 1 to May 16. This change allows lawful recreational and commercial crabbing to continue in the sanctuary through May 15.



BLUE CRAB SANCTUARY CHANGE



1-800-LINE FOR COMMISSION UPDATES



Call 1-800-937-9247 for updates from the Commission, special reporting, or to leave a message for staff

A new feature has been added to the Fisheries Management Division's 1-800 call-in phone line. Along with calling to report no activity, or harvest, you may now also receive updates on upcoming meetings of Finfish, Blue Crab, and Shellfish advisory committees, as well as

the results of the most recent Commission meeting. The call-in number for the VMRC Interactive Voice Response System (IVRS) is 1-800-937-

9247. Choose Option 3 for the new information section.

As always, the IVRS system is also available for harvesters to report no activity, immediate harvest information for required species (such as black sea bass, horseshoe crabs, spiny dogfish, and American shad bycatch), request forms and folders, and to leave messages for license information. When using the IVRS, please remember to provide your name and VMRC ID. If you are providing information for multiple watermen, please speak each name and VMRC ID clearly and slowly. Listen carefully to the recording for the correct option and required information that you must provide.

ONLINE REPORTING

Online (web-based) reporting for both the Mandatory Harvest Reporting Program and the Charter Boat industry is available.

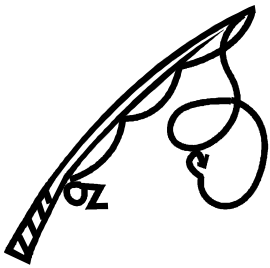
For Mandatory Harvest Reporting, online reporting means no more green-cards, no more folders, and no more forms. Just input your harvest reports daily, and you are done. For more information, contact Stephanie Iverson, Supervisor of the Mandatory Harvest Reporting Program, at (757) 247-2061.

For charter boat guides and captains, the Charter Boat Online reporting system is available. You can fulfill your mandatory harvest reporting for striped bass, tilefish, and grouper through the Charter Boat Online system. For more information, contact Justine Woodward at (757) 247-2116.

NORTH CAROLINA SUMMER FLOUNDER AND BLACK SEA BASS

Since March 7, 2011, the Commissioner has approved 162 separate summer flounder quota transfer and vessel landing requests from North Carolina because the shoaling of Oregon Inlet has prevented entry of vessels to that state. Rising fuel prices have also encouraged vessels to land in closer ports. This has doubled the amount of summer flounder being landed at Virginia buyers for the same time period. Additionally, over 35 black sea bass quota transfers and vessel landing requests from North Carolina have also been approved for the same reasons. The Marine Resources Commission will continue to work with the North Carolina Division of Marine Fisheries on a case-by-case basis for vessels impacted by the Oregon Inlet shoaling problem until the issue is resolved.

CHARTER BOAT MANDATORY REPORTING REQUIREMENTS



As a reminder to all charter boat owners, captains, and guides. You are required to report to the Commission all striped bass, tilefish and grouper landed either by paper form, or through the Charter Boat Online reporting system, as described below:

For Striped Bass

4VAC20-252-60. Bay and Coastal Spring Trophy-size Striped Bass Recreational Fisheries.

H. Persons engaging in the Bay and Coastal fisheries shall report the retention of any striped bass to the commission. Filing the report shall be the responsibility of the person retaining the striped bass or, in the case of any charter boat or vessel, the captain of the charter boat or vessel. These reports are due 15 days after the close of this fishery and shall be on forms provided by the commission. There will be separate forms for anglers and for charter boats or vessels.

For Tilefish and Grouper

4VAC20-1120-31. RECREATIONAL LANDING PERMIT.

It shall be unlawful to possess aboard, or to land from, any private recreational fishing vessel, charter boat or head boat, any tilefish or grouper, harvested recreationally, without first having obtained a Tilefish and Grouper Landing Permit, for that vessel, from the Marine Resources Commission. Such permit shall be completed in full, by the vessel owner or operator, approved by the Commissioner or his designee, and a copy shall be kept with the permittee, while tilefish or grouper is in the possession of that permittee.

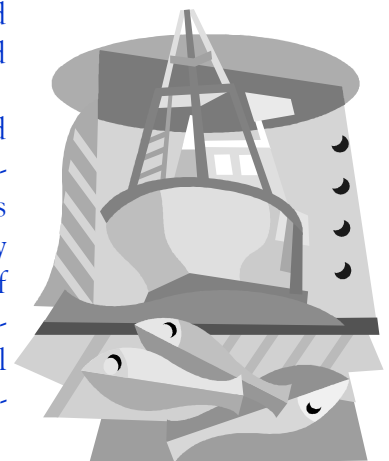
4VAC20-1120-32. RECREATIONAL MANDATORY HARVEST REPORTING.

A. It shall be unlawful for any registered Tilefish and Grouper Landing Permittee, as described in 4 VAC 20-1120-31, to fail to fully report harvests and related information, as set forth in this chapter and as provided by 4 VAC 20-610-60.

B. Registered Tilefish and Grouper Landing Permittees shall complete a daily form that accurately enumerates and legibly describes that permittee's daily harvest from Virginia tidal and federal waters. The form used to record daily harvest shall be that provided by the commission or approved by the commission.

C. Registered Tilefish and Grouper Landing Permittees shall submit a monthly harvest report to the commission, no later than the fifth day of the following month. This report shall be accompanied by the daily harvest records described in subsection D of this section. Completed forms shall be mailed or delivered to the commission or other designated locations.

D. The monthly harvest report and daily harvest records from registered Tilefish and Grouper Landing Permittees shall include the name and signature of the registered Tilefish and Grouper Landing Permittee and his license number, date of harvest, city or county of landing, water body fished, gear type and amount used, number of hours fished, number of individuals on board, including captain, species harvested, number of discard by species, live weight of each individual species harvested, and vessel identification (Coast Guard documentation number, Virginia license number, or hull/VIN number).



VIRGINIA MARINE PRODUCTS BOARD UPDATE

Virginia Marine Products Board has been working on a “Virginia Aquaculture Oyster Growers” Directory. The directory lists 35 growers and the regions they are growing oysters in. It is available to buyers looking for Virginia Aquaculture Oyster Suppliers and is located on the VMPB web site www.virginiaseafood.org under the “Trade tab” in a printable PDF file. We are also creating a brochure that describes the taste and flavor of the state’s oysters and is broken down into seven regions, including three on the Eastern Shore, three on the Western Shore of the Chesapeake Bay and those in the Tidewater area.

The board participated at Wegmans Supermarkets last fall with sampling and educational promotions of the Virginia Aquaculture oysters. Aquaculture oysters from the Eastern and Western Shores were promoted.

In November, the Virginia Marine Products Board helped with an event called the “Virginia Half Shell Oyster Tasting”, which was held in Gloucester. The event was sponsored by the Tidewater Oyster Gardeners Association. They selected six aquaculture oyster growers from the Middle Peninsula and sold tickets for the event. The board, along with Deborah Pratt held demonstrations on “How to Shuck Oysters”. Each person attending were given a taste profile card to rate each growers oysters. The Virginia Institute of Marine Science, Virginia Tech and the Virginia Department of Agriculture and Consumer Services also helped with this event.

At the International Boston Seafood Show, March 20-22, 2011, the Virginia Marine Products Board sampled aquaculture grown oysters from the seven regions of the bay. This show is the largest of its kind in the United States where retailers, wholesalers, imports, and distributors were able to sample Virginia oysters. The board also sampled soft shell crabs and Chesapeake ray, along with displaying all shellfish and finfish. The board returned with 132 leads that have been sent out to the industry.

Contact Us:

Mike Hutt or Joe Cardwell
Virginia Marine Products Board
554 Denbigh Blvd., Suite B
Newport News, VA 23608
Tel: 757-874-3474
www.virginiaseafood.org



MANDATORY REPORTING GUIDELINES



Mandatory Reporting Program Updates



Beginning in spring 2010, new mandatory reporting forms and folders were made available to commercial harvesters, aquaculture product owners, and seafood landing licensees. As of April 1, 2011, reports that are received on old forms will be returned to the sender with a packet of updated mandatory reporting forms and folders and a letter stating that reports need to be re-submitted on the updated forms. Individuals will also receive a phone call from staff notifying them that their reports are being returned. Please discard any outdated mandatory reporting forms and folders in your possession and be sure to submit your reports in a timely manner on the new mandatory reporting forms.

If a folder is submitted and contains a problem that can be resolved over the phone, staff will keep the folder while attempting to contact the harvester. If the harvester cannot be reached by phone, or does not return calls within one month, then the mandatory report will be mailed back to the commercial harvester to be corrected and resubmitted.

Please review the following pages for tips on filling out your mandatory harvest reports.

**THANK YOU TO ALL COMMERCIAL HARVESTERS WHO CONTINUE TO SUBMIT
COMPLETE AND TIMELY REPORTS!**

Please remember the following when filling out monthly mandatory reports:

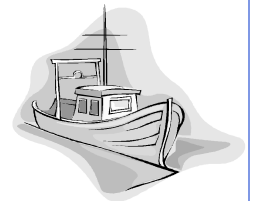
COMMERCIAL FISHERMAN REGISTRATION LICENSEES

Mandatory fields to be filled out by harvester:

- VMRC ID and name of the registered commercial fisherman
- VMRC ID and name of any agent, if used
- VMRC ID and name of no more than five helpers who were not serving as agents
- Buyer or private sale information
- Vessel identification (Coast Guard documentation number or VA registration number)
- Vessel name (if applicable)
- Public rock abbreviation (if applicable)
- Lease number for aquaculture (oysters and clams from private grounds (if applicable)
- City or county where harvest was landed
- Date of harvest
- Water body fished
- Number of hours any gear was fished
- Gear type and amount of gear used
- Number of hours the registered commercial fisherman fished
- Number of crew on board, including captain
- Species harvested, market category
- Live weight or processed weight of species harvested
- Information on the price paid for the harvest may be provided voluntarily

IMPORTANT REMINDERS

- Every ticket must have a valid date
- All reports must be received on mandatory reporting forms provided by the agency. Photocopies of forms will not be accepted.
- PLEASE DO NOT CUT FORMS
- If you have recently moved or changed telephone numbers, please contact VMRC as soon as possible



BLUE CRABS

- Only one gear per ticket (e.g. harvest from crab pots and peeler pots should be written on separate tickets)
- Report the crabs harvested FOR a shedding tank, DO NOT report soft crabs FROM a shedding tank

FINFISH

- Specify the species of catfish caught (for example, blue catfish or channel catfish)
- Specify the number of hooks when using trotlines
- Be sure to include the number of tags when harvesting striped bass

BLUE CRAB (USING AN AGENT)

↓VMRC ID AND NAME OF PRIMARY HARVESTER		<input checked="" type="checkbox"/> CHECK IF AGENT WAS USED		WATER FISHED	HRS GEAR FISHED	GEAR	GEAR AMOUNT	MAN HOURS	NO. OF CREW
				JRL	48	POT	250	6	1
↓VMRC ID	↓NAME	↓AGENT VMRC ID	↓AGENT NAME	SPECIES & MARKET CATEGORY	LIVE WEIGHT OR AMOUNT	*Check if Processed	UNITS (CIRCLE ONE):		
9999	Joe Fisherman	9998	Tom Fisherman	NO1	3	<input type="checkbox"/>	BU LBS	NU	BBL BOX DOZ GAL TRAY
				BCS	2	<input type="checkbox"/>	BU LBS	NU	BBL BOX DOZ GAL TRAY
↓VMRC ID AND NAME OF HELPERS		↓BUYER		BCP	2	<input type="checkbox"/>	BU LBS	NU	BBL BOX DOZ GAL TRAY
		Joe Crab Buyer							
↓VMRC ID	↓NAME	↓VESSEL IDENTIFICATION NO.				<input type="checkbox"/>	UNITS (CIRCLE ONE):		
		VA0000AA							
		↓VESSEL NAME				<input type="checkbox"/>	UNITS (CIRCLE ONE):		
		Virginia							
		↓PUBLIC ROCK ABBR (OYSTERS ONLY)				<input type="checkbox"/>	UNITS (CIRCLE ONE):		
		↓LEASE NUMBER (AQUA ONLY)				<input type="checkbox"/>	UNITS (CIRCLE ONE):		
		↓CITY/COUNTY LANDED				<input type="checkbox"/>	UNITS (CIRCLE ONE):		
		Fisherman County							
		↓DATE (ONE PER TICKET)				<input type="checkbox"/>	UNITS (CIRCLE ONE):		
		April 12, 2011							

FINFISH

↓VMRC ID AND NAME OF PRIMARY HARVESTER		<input type="checkbox"/> CHECK IF AGENT WAS USED		WATER FISHED	HRS GEAR FISHED	GEAR	GEAR AMOUNT	MAN HOURS	NO. OF CREW
				JRM	24	AGN	1 x 600ft	6	2
↓VMRC ID	↓NAME	↓AGENT VMRC ID	↓AGENT NAME	SPECIES & MARKET CATEGORY	LIVE WEIGHT OR AMOUNT	*Check if Processed	UNITS (CIRCLE ONE):		
9999	Joe Fisherman			SPOT	50	<input type="checkbox"/>	BU LBS	NU	BBL BOX DOZ GAL TRAY
				CRL	10	<input type="checkbox"/>	BU LBS	NU	BBL BOX DOZ GAL TRAY
↓VMRC ID AND NAME OF HELPERS		↓BUYER		TRM	91	<input type="checkbox"/>	BU LBS	NU	BBL BOX DOZ GAL TRAY
		Joe Buyer							
↓VMRC ID	↓NAME	↓VESSEL IDENTIFICATION NO.		FLDM	23	<input type="checkbox"/>	UNITS (CIRCLE ONE):		
		VA0000AA							
9876	Mary Fisherman	↓VESSEL NAME		BCAT	85	<input type="checkbox"/>	BU LBS	NU	BBL BOX DOZ GAL TRAY
		Virginia							
		↓PUBLIC ROCK ABBR (OYSTERS ONLY)				<input type="checkbox"/>	UNITS (CIRCLE ONE):		
		↓LEASE NUMBER (AQUA ONLY)				<input type="checkbox"/>	UNITS (CIRCLE ONE):		
		↓CITY/COUNTY LANDED				<input type="checkbox"/>	UNITS (CIRCLE ONE):		
		Fisherman County							
		↓DATE (ONE PER TICKET)				<input type="checkbox"/>	UNITS (CIRCLE ONE):		
		April 10, 2011							

FINFISH (WITH STRIPED BASS)

↓VMRC ID AND NAME OF PRIMARY HARVESTER		<input type="checkbox"/> CHECK IF AGENT WAS USED		WATER FISHED	HRS GEAR FISHED	GEAR	GEAR AMOUNT	MAN HOURS	NO. OF CREW
				CBLE	24	AGN	2 x 2400ft	7	2
↓VMRC ID	↓NAME	↓AGENT VMRC ID	↓AGENT NAME	SPECIES & MARKET CATEGORY	LIVE WEIGHT OR AMOUNT	*Check if Processed	UNITS (CIRCLE ONE):		
9999	Joe Fisherman			SPMAC	50	<input type="checkbox"/>	BU LBS	NU	BBL BOX DOZ GAL TRAY
				CRM	10	<input type="checkbox"/>	BU LBS	NU	BBL BOX DOZ GAL TRAY
↓VMRC ID AND NAME OF HELPERS		↓BUYER		TRO	91	<input type="checkbox"/>	BU LBS	NU	BBL BOX DOZ GAL TRAY
		Joe Buyer							
↓VMRC ID	↓NAME	↓VESSEL IDENTIFICATION NO.		PUFT	40	<input checked="" type="checkbox"/>	UNITS (CIRCLE ONE):		
		VA0000AA							
9876	Mary Fisherman	↓VESSEL NAME		STB (4 TAGS)	55	<input type="checkbox"/>	BU LBS	NU	BBL BOX DOZ GAL TRAY
		Virginia							
		↓PUBLIC ROCK ABBR (OYSTERS ONLY)				<input type="checkbox"/>	UNITS (CIRCLE ONE):		
		↓LEASE NUMBER (AQUA ONLY)				<input type="checkbox"/>	UNITS (CIRCLE ONE):		
		↓CITY/COUNTY LANDED				<input type="checkbox"/>	UNITS (CIRCLE ONE):		
		Fisherman County							
		↓DATE (ONE PER TICKET)				<input type="checkbox"/>	UNITS (CIRCLE ONE):		
		April 10, 2011							

Please remember the following when filling out monthly mandatory reports:

OYSTER HARVEST FROM PUBLIC GROUNDS

- Include the rock abbreviation (e.g, BURP), do not include the water code number (e.g., 345)
- Report all oysters in bushels



AQUACULTURE PRODUCT OWNERS (PRIVATE)



Mandatory fields to be filled out by aquaculture product owners:

- The VMRC ID and name of the seafood landing licensee
- VMRC ID and name of no more than five helpers who were not serving as agents
- Buyer or private sale information
- Include the lease number, not the plat number, of the grounds from which the oysters or clams were harvested. This number can be found on your billing statement from the VMRC.
- City or county of landing
- Date of harvest
- Water body fished
- Record the grow out period (seed to market) in the field, 'hrs gear fished' (OPTIONAL)
- Gear type
- Gear amount
- Number of crew on board, including captain
- Species harvested, market category
- Live weight or processed weight of species harvested
- Information on the price paid for the harvest may be provided voluntarily



PLEASE INCLUDE THE CORRECT LEASE NUMBER ON ALL MANDATORY REPORTS.

**ALL REPORTS ARE DUE BY THE 5TH OF THE FOLLOWING MONTH
(ACTIVE OR NOT ACTIVE).**

OYSTER HARVEST (PUBLIC GROUNDS)

↓VMRC ID AND NAME OF PRIMARY HARVESTER		<input type="checkbox"/> CHECK IF AGENT WAS USED		WATER FISHED	HRS GEAR FISHED	GEAR	GEAR AMOUNT	MAN HOURS	NO. OF CREW					
				PIA	7	OSCR	1	8	2					
↓VMRC ID	↓NAME	↓AGENT VMRC ID	↓AGENT NAME	SPECIES & MARKET CATEGORY	LIVE WEIGHT OR AMOUNT	*Check if Processed	UNITS (CIRCLE ONE):							
9999	Joe Fisherman			OYSPRNG	10	<input type="checkbox"/>	<input checked="" type="radio"/> BU	LBS	NU	BBL	BOX	DOZ	GAL	TRAY
↓VMRC ID AND NAME OF HELPERS		↓BUYER Joe Oyster Buyer				<input type="checkbox"/>	BU	LBS	NU	BBL	BOX	DOZ	GAL	TRAY
↓VMRC ID	↓NAME	↓VESSEL IDENTIFICATION NO. VA0000AA				<input type="checkbox"/>	BU	LBS	NU	BBL	BOX	DOZ	GAL	TRAY
9876	Mary Fisherman	↓VESSEL NAME Virginia				<input type="checkbox"/>	BU	LBS	NU	BBL	BOX	DOZ	GAL	TRAY
		↓PUBLIC ROCK ABBR (OYSTERS ONLY) BURP				<input type="checkbox"/>	BU	LBS	NU	BBL	BOX	DOZ	GAL	TRAY
		↓LEASE NUMBER (AQUA. ONLY)				<input type="checkbox"/>	BU	LBS	NU	BBL	BOX	DOZ	GAL	TRAY
		↓CITY/COUNTY LANDED Fisherman's County				<input type="checkbox"/>	BU	LBS	NU	BBL	BOX	DOZ	GAL	TRAY
		↓DATE (ONE PER TICKET) April 15, 2011				<input type="checkbox"/>	BU	LBS	NU	BBL	BOX	DOZ	GAL	TRAY

AQUACULTURE PRODUCT OWNERS (OYSTERS FROM PRIVATE GROUNDS)

↓VMRC ID AND NAME OF PRIMARY HARVESTER		<input type="checkbox"/> CHECK IF AGENT WAS USED		WATER FISHED	HRS GEAR FISHED	GEAR	GEAR AMOUNT	MAN HOURS	NO. OF CREW					
				YRL		BC	3		3					
↓VMRC ID	↓NAME	↓AGENT VMRC ID	↓AGENT NAME	SPECIES & MARKET CATEGORY	LIVE WEIGHT OR AMOUNT	*Check if Processed	UNITS (CIRCLE ONE):							
N00999	Joe Fisherman			OYSPRIV	10	<input type="checkbox"/>	<input checked="" type="radio"/> BU	LBS	NU	BBL	BOX	DOZ	GAL	TRAY
↓VMRC ID AND NAME OF HELPERS		↓BUYER Joe Oyster Buyer				<input type="checkbox"/>	BU	LBS	NU	BBL	BOX	DOZ	GAL	TRAY
↓VMRC ID	↓NAME	↓VESSEL IDENTIFICATION NO.				<input type="checkbox"/>	BU	LBS	NU	BBL	BOX	DOZ	GAL	TRAY
9876	Mary Fisherman	↓VESSEL NAME				<input type="checkbox"/>	BU	LBS	NU	BBL	BOX	DOZ	GAL	TRAY
9875	Johnny Fisherman	↓PUBLIC ROCK ABBR (OYSTERS ONLY)				<input type="checkbox"/>	BU	LBS	NU	BBL	BOX	DOZ	GAL	TRAY
		↓LEASE NUMBER (AQUA. ONLY) 98765				<input type="checkbox"/>	BU	LBS	NU	BBL	BOX	DOZ	GAL	TRAY
		↓CITY/COUNTY LANDED Fisherman's County				<input type="checkbox"/>	BU	LBS	NU	BBL	BOX	DOZ	GAL	TRAY
		↓DATE (ONE PER TICKET) April 16, 2011				<input type="checkbox"/>	BU	LBS	NU	BBL	BOX	DOZ	GAL	TRAY

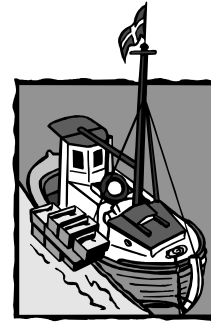
AQUACULTURE PRODUCT OWNERS (CLAMS FROM PRIVATE GROUNDS)

↓VMRC ID AND NAME OF PRIMARY HARVESTER		<input type="checkbox"/> CHECK IF AGENT WAS USED		WATER FISHED	HRS GEAR FISHED	GEAR	GEAR AMOUNT	MAN HOURS	NO. OF CREW					
				YRL		BUL	1		3					
↓VMRC ID	↓NAME	↓AGENT VMRC ID	↓AGENT NAME	SPECIES & MARKET CATEGORY	LIVE WEIGHT OR AMOUNT	*Check if Processed	UNITS (CIRCLE ONE):							
N00999	Joe Fisherman			CHEPRIV	103	<input type="checkbox"/>	<input checked="" type="radio"/> BU	LBS	NU	BBL	BOX	DOZ	GAL	TRAY
				CHDPRIV	200	<input type="checkbox"/>	<input checked="" type="radio"/> BU	LBS	NU	BBL	BOX	DOZ	GAL	TRAY
↓VMRC ID AND NAME OF HELPERS		↓BUYER Joe Clam Buyer		LITPRIV	168	<input type="checkbox"/>	<input checked="" type="radio"/> BU	LBS	NU	BBL	BOX	DOZ	GAL	TRAY
↓VMRC ID	↓NAME	↓VESSEL IDENTIFICATION NO.				<input type="checkbox"/>	BU	LBS	NU	BBL	BOX	DOZ	GAL	TRAY
9876	Mary Fisherman	↓VESSEL NAME				<input type="checkbox"/>	BU	LBS	NU	BBL	BOX	DOZ	GAL	TRAY
9875	Johnny Fisherman	↓PUBLIC ROCK ABBR (OYSTERS ONLY)				<input type="checkbox"/>	BU	LBS	NU	BBL	BOX	DOZ	GAL	TRAY
		↓LEASE NUMBER (AQUA. ONLY) 98764				<input type="checkbox"/>	BU	LBS	NU	BBL	BOX	DOZ	GAL	TRAY
		↓CITY/COUNTY LANDED Fisherman's County				<input type="checkbox"/>	BU	LBS	NU	BBL	BOX	DOZ	GAL	TRAY
		↓DATE (ONE PER TICKET) April 16, 2011				<input type="checkbox"/>	BU	LBS	NU	BBL	BOX	DOZ	GAL	TRAY

SEAFOOD LANDING LICENSEES

Mandatory fields to be filled out by Seafood Landing Licensees:

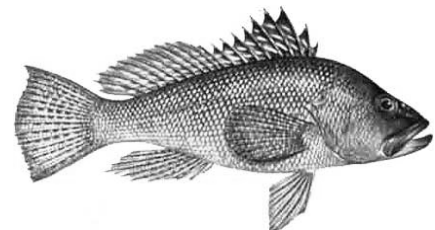
- Seafood landing license number and name of seafood landing licensee
- Buyer or private sale information
- Vessel identification (Coast Guard documentation number or VA registration number)
- Name of vessel (if applicable)
- City or county of landing
- Date of harvest
- Water body fished
- Number of hours gear fished
- Gear type and amount used
- Number of hours the seafood landing licensee fished
- Number of crew on board, including captain
- Species harvested, market category (NON-FEDERALLY PERMITTED SPECIES ONLY)
- Live weight or processed weight of species harvested



GENERAL REMINDERS

- It is illegal to place, set, or fish more than 200 conch pots in Virginia tidal waters
- Please ensure that separate mandatory reporting forms are used when submitting reports for species caught offshore

Please ensure that all fields are correctly filled out prior to submitting your mandatory reports. For questions about how to fill out mandatory reports please call 757-247-2241.



SEAFOOD LANDING LICENSEES (OFFSHORE) - FINFISH

↓VMRC ID AND NAME OF PRIMARY HARVESTER		<input type="checkbox"/> CHECK IF AGENT WAS USED		WATER FISHED	HRS GEAR FISHED	GEAR	GEAR AMOUNT	MAN HOURS	NO. OF CREW
				OSBVA	10	HL	4	12	2
↓VMRC ID	↓NAME	↓AGENT VMRC ID	↓AGENT NAME	SPECIES & MARKET CATEGORY	LIVE WEIGHT OR AMOUNT	*Check if Processed	UNITS (CIRCLE ONE):		
G9999	Joe Fisherman			TTG	20	<input type="checkbox"/>	BU LBS	NU BBL BOX DOZ GAL TRAY	
				CRO	80	<input type="checkbox"/>	BU LBS	NU BBL BOX DOZ GAL TRAY	
↓VMRC ID AND NAME OF HELPERS		↓BUYER Joe Buyer		BFL	50	<input type="checkbox"/>	BU LBS	NU BBL BOX DOZ GAL TRAY	
↓VMRC ID	↓NAME	↓VESSEL IDENTIFICATION NO. VA0000AA		TILE	25	<input type="checkbox"/>	BU LBS	NU BBL BOX DOZ GAL TRAY	
9876	Mary Fisherman	↓VESSEL NAME Virginia				<input type="checkbox"/>	BU LBS	NU BBL BOX DOZ GAL TRAY	
		↓PUBLIC ROCK ABBR (OYSTERS ONLY)				<input type="checkbox"/>	BU LBS	NU BBL BOX DOZ GAL TRAY	
		↓LEASE NUMBER (AQUA ONLY)				<input type="checkbox"/>	BU LBS	NU BBL BOX DOZ GAL TRAY	
		↓CITY/COUNTY LANDED Fisherman's County				<input type="checkbox"/>	BU LBS	NU BBL BOX DOZ GAL TRAY	
		↓DATE (ONE PER TICKET) April 24, 2011				<input type="checkbox"/>	BU LBS	NU BBL BOX DOZ GAL TRAY	

SEAFOOD LANDING LICENSEES (OFFSHORE) - CONCH

↓VMRC ID AND NAME OF PRIMARY HARVESTER		<input type="checkbox"/> CHECK IF AGENT WAS USED		WATER FISHED	HRS GEAR FISHED	GEAR	GEAR AMOUNT	MAN HOURS	NO. OF CREW
				OSVBA	24	CPOT	50	7	2
↓VMRC ID	↓NAME	↓AGENT VMRC ID	↓AGENT NAME	SPECIES & MARKET CATEGORY	LIVE WEIGHT OR AMOUNT	*Check if Processed	UNITS (CIRCLE ONE):		
G9999	Joe Fisherman			CONS	50	<input type="checkbox"/>	BU LBS	NU BBL BOX DOZ GAL TRAY	
				CONL	95	<input type="checkbox"/>	BU LBS	NU BBL BOX DOZ GAL TRAY	
↓VMRC ID AND NAME OF HELPERS		↓BUYER Joe Buyer				<input type="checkbox"/>	BU LBS	NU BBL BOX DOZ GAL TRAY	
↓VMRC ID	↓NAME	↓VESSEL IDENTIFICATION NO. VA0000AA				<input type="checkbox"/>	BU LBS	NU BBL BOX DOZ GAL TRAY	
9876	Mary Fisherman	↓VESSEL NAME Virginia				<input type="checkbox"/>	BU LBS	NU BBL BOX DOZ GAL TRAY	
		↓PUBLIC ROCK ABBR (OYSTERS ONLY)				<input type="checkbox"/>	BU LBS	NU BBL BOX DOZ GAL TRAY	
		↓LEASE NUMBER (AQUA ONLY)				<input type="checkbox"/>	BU LBS	NU BBL BOX DOZ GAL TRAY	
		↓CITY/COUNTY LANDED Fisherman's County				<input type="checkbox"/>	BU LBS	NU BBL BOX DOZ GAL TRAY	
		↓DATE (ONE PER TICKET) April 24, 2011				<input type="checkbox"/>	BU LBS	NU BBL BOX DOZ GAL TRAY	

SEAFOOD LANDING LICENSEES (OFFSHORE) - SMOOTH DOGFISH

↓VMRC ID AND NAME OF PRIMARY HARVESTER		<input type="checkbox"/> CHECK IF AGENT WAS USED		WATER FISHED	HRS GEAR FISHED	GEAR	GEAR AMOUNT	MAN HOURS	NO. OF CREW
				OSVBA	24	DGN	3x3600ft	7	2
↓VMRC ID	↓NAME	↓AGENT VMRC ID	↓AGENT NAME	SPECIES & MARKET CATEGORY	LIVE WEIGHT OR AMOUNT	*Check if Processed	UNITS (CIRCLE ONE):		
G9999	Joe Fisherman			CRO	250	<input type="checkbox"/>	BU LBS	NU BBL BOX DOZ GAL TRAY	
				TRO	95	<input type="checkbox"/>	BU LBS	NU BBL BOX DOZ GAL TRAY	
↓VMRC ID AND NAME OF HELPERS		↓BUYER Joe Buyer		TRM	56	<input type="checkbox"/>	BU LBS	NU BBL BOX DOZ GAL TRAY	
↓VMRC ID	↓NAME	↓VESSEL IDENTIFICATION NO. VA0000AA		DFSR	76	<input type="checkbox"/>	BU LBS	NU BBL BOX DOZ GAL TRAY	
9876	Mary Fisherman	↓VESSEL NAME Virginia				<input type="checkbox"/>	BU LBS	NU BBL BOX DOZ GAL TRAY	
		↓PUBLIC ROCK ABBR (OYSTERS ONLY)				<input type="checkbox"/>	BU LBS	NU BBL BOX DOZ GAL TRAY	
		↓LEASE NUMBER (AQUA ONLY)				<input type="checkbox"/>	BU LBS	NU BBL BOX DOZ GAL TRAY	
		↓CITY/COUNTY LANDED Fisherman's County				<input type="checkbox"/>	BU LBS	NU BBL BOX DOZ GAL TRAY	
		↓DATE (ONE PER TICKET) April 26, 2011				<input type="checkbox"/>	BU LBS	NU BBL BOX DOZ GAL TRAY	

MANDATORY HARVEST REPORTING NON-COMPLIANCE PROCESS

The automated non-compliance notification process was initially launched as a pilot program in 2010. As a result of its success, this program will be fully implemented during the spring of 2011.

Based on a harvester's reporting history, this notification process will automatically generate postcards which will serve as reminders for submitting mandatory reports.

Details for the non-compliance notification process are outlined below:

- ⇒ If a mandatory report is not submitted by the 5th of the following month, then a 1st notification postcard will be generated and mailed to the harvester.
- ⇒ If a mandatory report is not received after the 1st notification, then a 2nd notification postcard will be generated and mailed to the harvester.
- ⇒ If a mandatory report is not submitted after a 2nd notification has been issued, then the harvester may be requested to appear before the Commission.
- ⇒ This notification process will be put in place to ensure the timeliness and accuracy of submitting mandatory reports to VMRC.

BE SURE TO SUBMIT MANDATORY REPORTS, INCLUDING REPORTS OF 'NO ACTIVITY' BY THE 5TH OF THE FOLLOWING MONTH!



Sample of 1st notification postcard

April 29, 2011

Tom Fisherman
PO Box 1234
Aquaville, VA 22222

Dear Mr. Fisherman,

This letter serves as your FIRST notification by the Virginia Marine Resources Commission (VMRC) that your monthly mandatory harvest reports, required by Regulation 4 VAC 20-610 et set., are currently incomplete. As of April 29, 2011, our records indicate that you have not submitted a report for March 2011. If you need to report 'no activity' for March 2011, please call 1-800-937-9247 and leave a message on our automated voice mail system. If you did harvest seafood and have not submitted your reports, please do so by May 18, 2011. If your monthly reporting records are in error, please contact Mandatory Reporting at 757-247-2241, as soon as possible, between the hours of 8:30am and 4:00pm.

Sample of 2nd notification postcard

May 30, 2011

Tom Fisherman
PO Box 1234
Aquaville, VA 22222

Dear Mr. Fisherman,

This letter serves as your SECOND notification by the Virginia Marine Resources Commission (VMRC) that your monthly mandatory harvest reports, required by Regulation 4 VAC 20-610 et set., are currently incomplete. As of May 30, 2011, our records indicate that you have not submitted a report for March 2011. If you need to report 'no activity' for March 2011, please call 1-800-937-9247 and leave a message on our automated voice mail system. If you did harvest seafood and have not submitted your reports, please do so by June 16, 2011. If your monthly reporting records are in error, please contact Mandatory Reporting at 757-247-2241, as soon as possible, between the hours of 8:30am and 4:00pm.

***You are hereby advised that if a THIRD notification is required to resolve this deficiency in your mandatory harvest reporting, you will receive a notice to appear before the Virginia Marine Resources Commission

MEETINGS

VMRC – Virginia Marine Resources Commission – Meetings set on the 4th Tuesday of each month. Meetings begin at 9:30am. (fisheries items begin at 12:00 noon), and are held at the Commission’s main office in Newport News.

ASMFC – Atlantic States Marine Fisheries Commission – Call (202) 452-9110 to find out meeting dates, location, and time.

CMAC – Crab Management Advisory Committee – Meeting dates vary. Refer to VMRC website calendar for meeting updates.

<http://mrc.virginia.gov/calendar.shtm>

FMAC – Finfish Management Advisory Committee – Meeting dates vary. Refer to VMRC website calendar for meeting updates.

<http://mrc.virginia.gov/calendar.shtm>

MAFMC – Mid-Atlantic Fishery Management Council – Call (302) 674-2331 for meeting dates, location and time.

CFAB – Commercial Fishery Advisory Board – Contact Sonya Davis (757) 247-8155 for information.



COMMONWEALTH OF VIRGINIA
MARINE RESOURCES COMMISSION

ADDRESS CORRECTION REQUESTED

PRSRT STD
US POSTAGE
PAID
NORFOLK, VA
PERMIT NO 2217

