



VMRC FISHERIES NEWSLETTER

This newsletter provides only a summary of management measures adopted by the Commission and has no legal force or effect. The purpose of this newsletter is to explore events and issues of interest to commercial fishermen, VMRC managers, Law Enforcement, researchers, and the Commission.



Volume 22, Issue 1
Spring 2014

Inside this issue:

Blue Crab Updates	2-3
American Eel	3-4
Horseshoe Crab	4
Striped Bass	5
Atlantic Menhaden	5-6
Oyster User Fees	7
CBIBS Buoy	8
Mandatory Reporting	9-15

INSIDE THE SPRING 2014 ISSUE:

This issue of the Virginia Marine Resources Commission Commercial Fisheries Newsletter contains updates on recent regulatory decisions by the Commission.

Additional information for the 2014 blue crab pot fishery, including changes to bushel limits, is provided.

Important regulatory amendments affecting the fisheries of horseshoe crabs, striped bass, American eel, and Atlantic menhaden are included.

Instructions for mandatory reporting for all commercial harvesters are included, with several examples.

You will also find information regarding a relatively new resource to get offshore weather information from the NOAA Chesapeake Bay Office.

We would like to thank all of the Virginia commercial harvesters that actively participate in programs and meetings sponsored by the Commission. Have a great spring and summer!

COMMISSIONER TRAVELSTEAD RETIRES



We serve as stewards of the Commonwealth's marine and aquatic resources, and protectors of its tidal waters and homelands, for present and future generations.

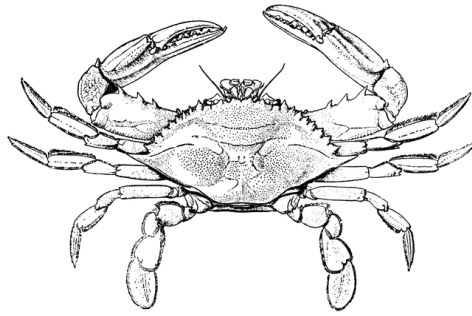


The Virginia Marine Resources Commissioner Jack G. Travelstead retired from state service on January 10, 2014 after almost 33 years of outstanding service to the Commonwealth. Commissioner Travelstead leaves behind an enduring legacy of fair and balanced marine resource management. He served as the agency's first Chief of Fisheries Management from 1984 to 2012, and was appointed commissioner of the VMRC by Governor Robert F. McDonnell in

2012. Commissioner Travelstead's knowledge, vision, and stewardship resulted in sustainable fisheries and remarkable improvements to the Commonwealth's natural resources.

Mr. John M. R. Bull has been designated as the Acting Commissioner for the Marine Resources Commission effective January 13, 2014. Mr. Bull has been with the agency since June 1, 2007 as the Director of Public Relations, and has been very involved in all aspects of Commission business.

2014 BLUE CRAB POT FISHERY



At the November 2013 Commission meeting, the Commission amended Chapter 4 VAC 20-270-10 et seq., "Pertaining to Blue Crabs". This amendment extended the blue crab pot season by allowing the harvest of male and female blue crabs through December 15, 2013. To offset this increase in harvest, the Commission established license category-specific bushel limits for the 2014 blue crab season as a conservation equivalence measure. Previously, at the February 2013 Commission meeting, the Commis-

sion approved new amendments to Chapter 4 VAC 20-270-10 et seq., to establish maximum daily bushel limits of blue crabs, on a vessel, so that the daily limit shall correspond to the highest harvest and possession limit of only one licensee on board that vessel, as well as an amendment that would limit the number of agents in the blue crab fishery in 2013. These amendments are extended through 2014, and updated as described below.

2014 Blue Crab Bushel & Barrel Limits

From March 17, 2014 through November 30, 2014, any harvester legally licensed for a crab pot license is limited to the following harvest and possession limits shown below:

- 1) 16 bushels, or 5 barrels and 1 bushel, of crabs, if licensed for up to 85 crab pots.
- 2) 21 bushels, or 7 barrels, if licensed for up to 127 crab pots.
- 3) 27 bushels, or 9 barrels, if licensed for up to 170 crab pots.
- 4) 43 bushels, or 14 barrels and 1 bushel, if licensed for up to 255 crab pots.
- 5) 55 bushels, or 18 barrels and 1 bushel, if licensed for up to 425 crab pots.

Because some harvesters use barrels rather than bushels, the Commission defined a barrel to be equivalent in volume to no more than 3 bushels of crabs.

2014 Daily Individual & Vessel Possession Limits

Bushel limits have eliminated the 51 bushel vessel limit that was previously in place for the spring (March 17 - May 31) each year. Bushel limits were adopted initially in 2013, in an effort to avoid combining bushel limits through license "stacking." To address the lack of a vessel limit, the Crab Management Advisory Committee (CMAC) also recommended that when multiple crab pot licensees are on board a vessel, the overall vessel limit should equal the bushel limit of the highest license holder on board, for example, if an 85-pot license holder is on a vessel with a 255-pot license holder, the vessel limit would be equal to 43 bushels. Emergency amendments to Chapter 4 VAC 20-270-10 et seq. establish that the new bushel and vessel possession limits are daily limits.

(Continued from previous page)

Limiting the use of agents

Reports from industry suggested that with the new license category-specific bushel limits by pot category, some licensees who have not been previously active may attempt to capitalize on the new bushel-limit system by using agents. Because latent effort can be activated by the agent process, it can increase overcapacity in the fishery. In times of low abundance, that may lead to overfishing.

CMAC recommended that the number of crab agents for 2014 be limited to the number of 2013 licensees that used agents or transferees of a 2013 license, plus a 10% buffer for new individuals interested in obtaining an agent for 2014, for a total of 168 agents. The Commissioner can still approve requests for agent use for non-economic hardships.

REMINDER

The VMRC staff would like to remind the blue crab industry that these license category-specific bushel limits and limited number of agents are only in place for the 2014 season. Crab management plans specific to 2015 will be discussed with CMAC this summer and with recommendations to the Commission by the fall.

AMERICAN EEL REGULATIONS

The Atlantic States Marine Fisheries Commission (ASMFC) approved a benchmark stock assessment for American eels in May 2012. The assessment concluded that the American eel population in U.S. waters is depleted, which is defined as a species or stock that is below its optimum sustainable population. The American eel stock is at or near historically low levels, because of a combination of historical overfishing, habitat loss, food web alterations, predation, turbine mortality, environmental changes, toxins and contaminants, and disease. The U.S. Fish and Wildlife Service is also considering listing American eel under the Endangered Species Act. The outcome of those deliberations by the U.S. Fish and Wildlife Service will not be known until 2015.

In response to the findings of the 2012 benchmark stock assessment, and in recognition of the potential listing of this species, the ASMFC American Eel Management Board directed the Technical Committee to develop a draft of Addendum III to the 2000 ASMFC Interstate Fishery Management Plan (FMP) for American eel. The goal of Addendum III is to reduce mortality and increase the conservation of American eel stocks across all life stages. All states

were required to implement the Addendum's measures by January 1, 2014. The ASMFC American Eel Management Board approved conservation measures presented in Addendum III to the American eel FMP at its August 2013 board meeting.

At its December 10, 2013 public hearing, the Virginia Marine Resources Commission adopted all requirements of Addendum III to Chapter 4VAC20-500-10 et seq., "Pertaining to the Catching of Eels." The Commission established a 9-inch minimum recreational and commercial size limit on American eels, a 25 fish per day recreational possession limit of American eels, and a 50 fish per day possession limit for head boats and charter boats for each captain and mate, but non-crew members (passengers) will be restricted to the 25 fish per day recreational possession limit of American eels.

The Commission also established a seasonal closure from September 1 through December 31 of each year for all commercial gears, except for pots and traps. This closure would help reduce mortality on the silver eel life stage. Silver eels migrate out of coastal waters and tributaries between the months of September through October. Fyke nets, pounds nets, and weirs have the highest rate of capture of

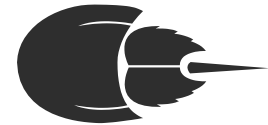
(Continued from previous page)

silver eels. It is believed that most silver eels do not respond to baited pots and traps. Increasing the survival of silver eels provides the greatest chance of increasing spawning success.

To increase reporting accuracy, Addendum III also requires each state to implement monthly trip level dealer reporting by the year 2015. Staff is currently working with industry to develop options to meet this requirement.



HORSESHOE CRAB REGULATIONS



At its December 10, 2013 public hearing, the Virginia Marine Resources Commission adopted new amendments to Chapter 4VAC20-900-10 et seq. "Pertaining to Horseshoe Crab". These amendments establish a new gear-specific permitting system, as well as gear-specific daily possession limits.

Virginia exceeded its commercial horseshoe crab quota for the first time in 2009 and, despite additional conservation measures for that season (including the establishment of a horseshoe crab bycatch permit, increased buyer reporting requirements, and an adjustment in landing limit reduction triggers) the 2010 reduced quota was also exceeded.

These quota overages prompted industry concern that there may be an overcapacity of horseshoe crab licenses. Based on results from an industry-wide survey as well as a series of public meetings between VRMC staff, Law Enforcement, and the horseshoe crab industry, recommendations on a new quota category-specific licensing system and new daily harvest limits for horseshoe crabs in 2014 were developed.

Eligibility for the newly established Horseshoe Crab Trawl Permit, Horseshoe Crab Class A Dredge Per-

mit, Horseshoe Crab Class B Dredge Permit, Horseshoe Crab Pound Net Permit, and Horseshoe Crab Hand Harvest Permit shall be limited to individuals who were: 1) eligible for a horseshoe crab license or permit, prior to the license moratorium date of May 1, 2011; and, 2) have documented a minimum harvest of one horseshoe crab by that gear, prior to the control date of December 31, 2010, in the Commission's mandatory harvest reporting system or in the federal dealer reports to the Standard Atlantic Fisheries Information System (SAFIS).

The exact gear-specific permit eligibility requirements can be found in Subsections 4VAC20-900-21 C through G.

Eligibility for the newly established Horseshoe Crab General Category Permit, for gears such as gill net, will be limited to individuals who were eligible for an Unrestricted Horseshoe Crab Endorsement License or a Horseshoe Crab Bycatch Permit prior to the license moratorium of May 1, 2011. This general permit will allow individuals to possess 250 horseshoe crabs per day, **by any method other than trawl, dredge, pound net, or hand harvest.**

New daily harvest limits for horseshoe crabs by gear, for 2014, are as follows:

Trawl Permit:	2,500 horseshoe crabs	Pound Net Permit:	500 horseshoe crabs
Class A Dredge Permit:	2,500 horseshoe crabs	Hand Harvest Permit :	500 horseshoe crabs
Class B Dredge Permit:	1,000 horseshoe crabs	General Category Permit:	250 horseshoe crabs

STRIPED BASS REGULATIONS

At its December 10th, 2013 public hearing the Virginia Marine Resources Commission adopted new amendments to Chapter 4VAC20-252-10 et seq. "Pertaining to the Taking of Striped Bass." These amendments established an increase in both the 2014 recreational and commercial striped bass quota by 14 percent each. The total allowable level of all commercial harvest of striped bass is 1,402,325 pounds for the Chesapeake Bay area, and 184,853 pounds for the Coastal area of Virginia. The commercial striped bass season opened on January 16, 2014.

A new method for allocating coastal tags to each eligible 2014 striped bass permit holder was also established in order to minimize abuses of the individual transferable weight quota system. More information on tag allocation can be found in Subsections 4VAC20-252-70 C through E.

Staff would also like to remind any buyer permitted to purchase striped bass harvested from Virginia tidal waters that they shall provide written reports to the Commission of daily purchases and harvest information each month.

Commercial striped bass shares shall not be transferred in any quantity less than 500 pounds, or 100% of unused permanent shares, from February 1 through September 30, and transfers shall be prohibited during the period of October 1 through November 30 and December 16 through January 31. Temporary transfer of commercial striped bass shares, in any quantity greater than 200 pounds, shall be permitted between December 1 and December 16.

To schedule a striped bass quota transfer, please contact Melanie Ramirez at (757) 247-2238 between the hours of 8:30 a.m. and 4:30 p.m. Monday through Thursday, or Friday between the hours of 8:30 a.m. and 2:00 p.m. No walk-in (non-appointment) striped bass quota transfers, or additional tag allocations, will be allowed. If you do not have a confirmed appointment with staff, you will be required to schedule an appointment for a later date and time.

ALEWIVES VS. MENHADEN IDENTIFICATION

A moratorium on possession of river herring (alewife and blueblack herring) from Virginia tidal waters was established January 1, 2012 to rebuild the Virginia stocks of the species. These species look very similar to the Atlantic menhaden, a legally-harvested species. Descriptions of the two most commonly misreported species are provided below to ensure commercial harvesters are reporting the correct species.

ALEWIVES

- More slender body
- Single large black spot
- Heavy, sharp serrations along underside

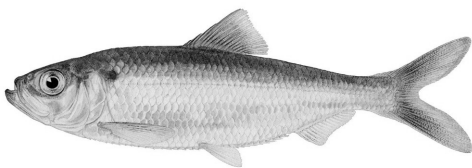


Photo courtesy of Cornell University

MENHADEN

- Deep belly
- Multiple spots (single larger black spot behind gill cover, followed by up to 6 lines of smaller spots)
- No serrations along underside

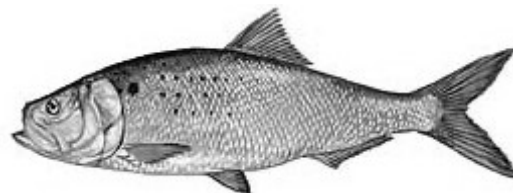


Photo courtesy of Chesapeake Bay Ecological Foundation, Inc.

NEW MENHADEN REGULATION

On December 14, 2012, the ASMFC adopted Amendment 2 to the Interstate Fishery Management Plan for Atlantic Menhaden. The major impact to Virginia from Amendment 2 was the 20% reduction from average 2009-2011 coast-wide landings that was placed on the Atlantic Coast States.

Section 28.2-400.2 of the Code of Virginia establishes the total allowable commercial landings for menhaden in 2013 and 2014 in metric tons equivalent to 318,067,167 pounds. The purse seine menhaden reduction sector is allocated an annual quota of 286,396,768 pounds of allowable menhaden landings. The purse seine menhaden bait sector is provided a 26,648,870-pound annual quota of allowable menhaden landings. The non-purse seine menhaden bait sector is allocated a 5,021,529-pound annual quota of allowable menhaden landings.

On March 26, 2013, the Commission adopted Chapter 4 VAC 20-1270-10 et seq. "Pertaining to Atlantic Menhaden" as authorized by the Code of Virginia, to comply with requirements established by Amendment 2.

The non-purse seine menhaden commercial bait sector shall submit daily reports according to the schedule and reporting requirements established by Chapter 4 VAC 20-610-10 et seq., "Pertaining to Commercial Fishing and Mandatory Harvest Reporting".

When the Commissioner announces that 90% of the non-purse seine menhaden bait quota has been reached, each harvester of this sector is required to

report his previous 10 days of landings by calling the Commission's Interactive Voice Recording System (1-800-937-9247; first choose Option 2, then Option 8) and continue to report additional landings every 10 days, until it is announced that the non-purse seine bait quota has been attained. More frequent reporting is permissible. The Commission may also implement other harvest conservation measures such as trip limits.

When a non-purse seine menhaden bait sector quota, by gear, is announced as having been attained, individuals using that specific gear type may land no more than 6,000 pounds of menhaden per day, as bycatch. All bycatch landings of menhaden must be reported according to the schedule and reporting requirements established by Chapter 4 VAC 20-610-10 et seq., "Pertaining to Commercial Fishing and Mandatory Harvest Reporting".

The ASMFC is currently conducting a Benchmark Stock Assessment of Atlantic Menhaden in 2014 that should better determine whether overfishing is occurring or whether the stock is overfished. The results of the stock assessment will not be available until February 2015 for management consideration.

Virginia General Assembly Senate Bill 49 (and House Bill 655) extends the sunset date for management of the menhaden fishery from January 1, 2015, to July 1, 2016. The bill also allows any person purchasing more than one of the licenses for the same vessel to catch menhaden with a purse net to pay a fee equal to that for a single license.

The non-purse seine menhaden bait sector quota by gear, for 2014, is as follows:			
Cast Net:	1,930 pounds	Dredge:	3,069 pounds
Fyke Net:	2,115 pounds	Pound Net:	3,412,020 pounds
Gill Net:	1,521,108 pounds	Seine:	20,103 pounds
Hook and Line:	234 pounds	Trawl:	58,847 pounds
Pot:	2,064 pounds	Trot Line:	39 pounds

This newsletter provides only a summary of management measures adopted by the Commission and has no legal force or effect. Please refer to the actual regulation for legal documentation.



On January 20, 2012, Delegate Margaret B. Ransone submitted a letter to the VMRC Commissioner requesting the establishment of a panel to study the current oyster inspection and replenishment tax system. Delegate Ransone sought a thorough investigation as to how the current system can be improved for a more consistent and comprehensive source of financial support to the Oyster Replenishment Fund.

During the summer of 2012, a panel consisting of commercial harvesters, shellfish shippers, packers and repackers, oyster aquaculturists, the Virginia Seafood Council and the Virginia Shellfish Growers met and found that the current oyster inspection tax and replenishment tax did not generate sufficient resources to sustain more than a marginal oyster replenishment program. They recommended that the oyster tax system be abolished and replaced with the Oyster Resources User Fees.

In the 2013 General Assembly session, the recommendations of this panel were adopted into the Code of Virginia. Beginning on July 1, 2013, the oyster inspection and replenishment tax were no longer collected on oysters harvested after that date, and submission of the MRC forms 453, 455, and 457 are no longer required for oyster harvests after June 30, 2013. All oyster harvests will be reported by the public ground harvester or aquaculture product owner to the Mandatory Harvest Reporting system.

All oyster harvesters, oyster buyers, oyster shucking houses, and oyster aquaculturists are required to pay an Oyster Resource User Fee prior to any harvest of oysters, as of July 1, 2013.

Proceeds from all Oyster Resource User Fees will be deposited to the Oyster Replenishment Fund. Harvesters, aquaculturists, and buyers may pay these fees from a MRC licensing agent or by mail. Payment is required prior to using any of the listed gear types in 2014 and subsequent years, for harvesting oysters from private ground, buying public ground oysters, or shucking or packing oysters. Harvesters who work on both public and private grounds will pay both the aquaculture and gear (or hand) harvest user fees each year. The shucking house fees must be paid in person or by mail from the MRC Main Office, or from the licensing office in Heathsville. Oyster Resource User Fees and oyster gear licenses will not be sold at the MRC Operations Office.

Oyster Buyer Licenses

There are also two new buyer licenses for any person purchasing oysters caught from the public grounds of the Commonwealth or the Potomac River from the harvester. For a single place of business with one boat or motor vehicle, this license is \$50. For a single place of business with multiple boats or motor vehicles used for buying oysters, this license is \$100. User fees are in addition to buyers licenses and do not replace them.

USER TYPE		RESOURCE USER FEE
Any licensed commercial fisherman harvesting public ground oysters by hand only (Seaside of the Eastern Shore only)		\$50.00
Any licensed commercial fisherman harvesting public ground oysters with any type of gear		\$300.00
Any commercial operation taking oysters from a riparian assigned or general oyster planting ground (Oyster Aquaculture Product Owner Permit or Oyster Aquaculture Harvester Permit)		\$50.00
Any business shucking or packing oysters:	a) Less than 1,000 gallons/year	\$500.00
	b) 1,001–10,000 gallons/year	\$1,000.00
	c) 10,001–25,000 gallons/year	\$2,000.00
	d) 25,001 gallons or more/year	\$4,000.00
Any oyster buyer purchasing oysters harvested from public grounds	a) Single truck or location	\$100.00
	b) Multiple trucks or locations	\$300.00

NON-AGENCY NEWS: FIRST LANDING BUOY DELIVERS INFO ON WIND, WAVES, AND MORE 24/7

For those headed offshore, a relatively new resource may come in handy. The NOAA Chesapeake Bay Interpretive Buoy System's (CBIBS) "First Landing" buoy is located near the Chesapeake Bay Bridge-Tunnel near Virginia Beach. Like other CBIBS buoys, it monitors 25 different variables including wind speed, wave height, temperature, and salinity—and updates information every 10 minutes. It is bright yellow, 14 feet tall, and features an active radar reflector with an enhanced radar signature.

It's easy to check data from the buoy to see what conditions are like out on the water. All this data is available to you at no charge via the buoy system's website, www.buoybay.noaa.gov, a toll-free phone number, 877-BUOY-BAY (877-286-9229), and apps for Android and iPhone smartphones (visit the website for easy links to these apps).

The First Landing buoy is the newest CBIBS; there are nine other buoys located in the Chesapeake Bay. They are on station all the way north to the mouth of the Susquehanna River.



Be a Bayfriend

The Chesapeake Bay is one of Virginia's greatest natural resources and one of the most challenged bodies of water in the state. Virginia ranks third in the nation for seafood production. Chesapeake Bay oysters and blue crabs are some of the tastiest in the world. But we need help from citizens like you to keep the bay clean. **Consider a bay license plate.**

Money from the sale of these plates helps citizens keep the bay healthy. More than 100 grants were provided last year to restore wetlands, plant buffers around waterways, promote shad restoration, decrease pollution and provide educational programs.

Now you can join the cause from your car by becoming a **Friend of the Chesapeake Bay.**

For a \$25 annual fee you can have personalized revenue-sharing license plates with \$15 going to the Chesapeake Bay Restoration Fund.

So, Bayfriend, what's on your plate?
To purchase a plate, visit www.dmv.state.va.us/vehicles/#splates/info.asp?idnm=CB

MANDATORY REPORTING GUIDELINES

OLD MANDATORY REPORTING FORMS

Please dispose of old Mandatory Reporting forms received prior to 2010. Mandatory reports filled out using old forms are no longer accepted and will be returned. Valid forms have a revision date of 2010 or later. This revision date can be found on the upper left hand of the form. You may request additional forms and folders at any time by contacting the Mandatory Reporting Staff at 757-247-2241.

1-800-LINE INFORMATION

The VMRC Interactive Voice Response System (IVRS) (1-800-937-9247) is available for harvesters to report no activity, report immediate harvest information for required species (such as black sea bass, horse-shoe crabs, spiny dogfish, and American shad by-catch), request forms and folders, and leave messages for license information. When using the IVRS, please remember to provide your name and VMRC ID.

VMRC SERVICE DEMANDS HAVE INCREASED

More permits and transfers are being processed than ever before. For that reason, it is our recommendation that you call prior to planning any trip to the Fisheries Management Division offices in Newport News, to ensure someone will be available to assist you with your item on that day. Fisheries staff members are working diligently to provide services as quickly as possible; however, staff resources and personnel are limited, and there will be some days that we may not be able to directly assist you with a specific problem until a later time or date. Please assist us in helping you. Thank you for your consideration.

PLEASE REMEMBER THAT YOU MUST REPORT BY THE 5TH OF THE FOLLOWING MONTH EVEN IF YOU HAVE NOT HARVESTED (NO ACTIVITY)!

HELPERS—YOUR MRC ID AND FULL NAME SHOULD BE LISTED ON THE PRIMARY HARVESTER'S MANDATORY REPORTING FORM!

ONLINE REPORTING IS AVAILABLE

Online harvest reporting is available to all licensed commercial harvesters with the appropriate computer equipment and internet access. To register for the program, send an email to Stephanie.Iverson@mrc.virginia.gov and provide Stephanie Iverson your full name, VMRC ID, and valid vessel document number, or call her at 757-247-2061 with all the information above and a current email address. Once your account has been requested and approved you will get an initial email with your username, and instructions on getting your password. You will also be asked to agree to terms and conditions of use, and be given basic computer safeguarding information. Once you are able to log on to the system for the first time, review the YouTube tutorial for instructions on navigating the data entry screens. There will be three tabs for specific reporting requirements. Review all lookup tables before beginning to enter data and use proper abbreviations. You may also report your 'no activity' and get a summary of all records you have submitted through the online reporting system. Also note your online account will have to be reset if you don't use it for 120 days. You may contact Stephanie Iverson through the feedback tab if you have any questions or problems while using the system.



Please remember the following when filling out monthly mandatory reports:

COMMERCIAL FISHERMAN REGISTRATION LICENSEES

Mandatory fields to be filled out by harvester:

- VMRC ID and full and legal name of the registered commercial fisherman
- VMRC ID and full and legal name of any agent, if used
- VMRC ID and full and legal name of no more than **five** helpers who were not serving as agents
- Buyer or private sale information (one per ticket)
- Vessel identification (Coast Guard documentation number or VA registration number; one per ticket)
- Vessel name (if applicable), not the make
- Public rock abbreviation (if applicable)
- Lease number for aquaculture (oyster and clams) harvested from private grounds (if applicable)
- City or county where harvest was landed
- Date of harvest (one day per ticket)
- Water body fished (one per ticket; use codes from mandatory reporting folders)
- Number of hours any gear was fished
- Gear type and amount of gear used (one per ticket)
- Number of hours the registered commercial fisherman fished (dock to dock; use whole numbers, and do NOT multiply by crew members)
- Number of crew on board, including captain
- Species harvested, market category
- Live weight or processed weight of species harvested
- Circle unit of measure
- Put a check mark if the product was processed (Filletted, Gutted, Picked, Puffer Tails, Fins, etc...)

BLUE CRABS

- Only one gear per ticket (e.g. harvest from crab pots and peeler pots should be written on separate tickets)
- Report peelers and soft crabs in numbers
- Report the peeler crabs harvested FOR a shedding tank, DO NOT report soft crabs FROM a shedding tank

FINFISH

- For anchored gill net (AGN), be sure to include number of nets and total amount in feet
- Specify the number of hooks you used for trot lines
- Be sure to include the number of tags used for harvesting striped bass
- Receipts must be included for striped bass sold as retail when the amount sold is more than 10 pounds
- Report the number of black drum kept

All licenses are effective for one calendar year. 2013 licenses, permits, and user fees expired Dec 31, 2013.

EXAMPLES

BLUE CRAB (USING AN AGENT)

PRIMARY HARVESTER VMRC ID & NAME		<input checked="" type="checkbox"/> CHECK IF AGENT USED	↓AGENT VMRC ID	WATER FISHED	HRS GEAR FISHED	GEAR	GEAR AMOUNT	MAN HOURS	NO. OF CREW
9999			9998	JRL	48	POT	250	6	1
↓ VMRC ID	↓ NAME		↓ AGENT NAME	↓ SPECIES & MARKET CATEGORY	↓ AMOUNT	↓ UNITS (CIRCLE ONE):			* Check if processed
9999	Joseph Fisherman		Thomas Fisherman			BU LBS NU BBL BOX DOZ GAL TRAY			<input type="checkbox"/>
			↓ BUYER						
			Joe Crab Buyer	NO1	3	BU LBS NU BBL BOX DOZ GAL TRAY			<input type="checkbox"/>
			↓ VESSEL ID NO.						
			VA0000AA	BCS	2	BU LBS NU BBL BOX DOZ GAL TRAY			<input type="checkbox"/>
↓ VMRC ID	↓ NAME		↓ VESSEL NAME						
			Miss Virginia	BCP	2	BU LBS NU BBL BOX DOZ GAL TRAY			<input type="checkbox"/>
			↓ PUBLIC ROCK ABBR (OYSTERS ONLY)						<input type="checkbox"/>
			↓ LEASE NUMBER (AQUA. ONLY)						<input type="checkbox"/>
			↓ CITY/COUNTY LANDED						<input type="checkbox"/>
			Fisherman County						<input type="checkbox"/>
			↓ DATE (ONE PER TICKET)						<input type="checkbox"/>
			April 12, 2014						<input type="checkbox"/>

FINFISH

PRIMARY HARVESTER VMRC ID & NAME		<input type="checkbox"/> CHECK IF AGENT USED	↓AGENT VMRC ID	WATER FISHED	HRS GEAR FISHED	GEAR	GEAR AMOUNT	MAN HOURS	NO. OF CREW
9999				CBLE	24	AGN	3@3600ft	7	3
↓ VMRC ID	↓ NAME		↓ AGENT NAME	↓ SPECIES & MARKET CATEGORY	↓ AMOUNT	↓ UNITS (CIRCLE ONE):			* Check if processed
9999	Joseph Fisherman					BU LBS NU BBL BOX DOZ GAL TRAY			<input type="checkbox"/>
			↓ BUYER						
			Joe Fish Buyer	SPOT	200	BU LBS NU BBL BOX DOZ GAL TRAY			<input type="checkbox"/>
			↓ VESSEL ID NO.						
			VA0000AA	CRL	96	BU LBS NU BBL BOX DOZ GAL TRAY			<input type="checkbox"/>
↓ VMRC ID	↓ NAME		↓ VESSEL NAME						
			Miss Virginia	TRM	24	BU LBS NU BBL BOX DOZ GAL TRAY			<input type="checkbox"/>
9876	Mary Fisherman		↓ PUBLIC ROCK ABBR (OYSTERS ONLY)						<input type="checkbox"/>
			↓ LEASE NUMBER (AQUA. ONLY)						<input type="checkbox"/>
9874	William Fisherman			TRL	30	BU LBS NU BBL BOX DOZ GAL TRAY			<input type="checkbox"/>
			↓ CITY/COUNTY LANDED						<input type="checkbox"/>
			Fisherman County						<input type="checkbox"/>
			↓ DATE (ONE PER TICKET)						<input type="checkbox"/>
			April 12, 2014						<input type="checkbox"/>

FINFISH (WITH STRIPED BASS)

PRIMARY HARVESTER VMRC ID & NAME		<input type="checkbox"/> CHECK IF AGENT USED	↓AGENT VMRC ID	WATER FISHED	HRS GEAR FISHED	GEAR	GEAR AMOUNT	MAN HOURS	NO. OF CREW
9999				OVB	24	AGN	2@2400ft	7	2
↓ VMRC ID	↓ NAME		↓ AGENT NAME	↓ SPECIES & MARKET CATEGORY	↓ AMOUNT	↓ UNITS (CIRCLE ONE):			* Check if processed
9999	Joseph Fisherman					BU LBS NU BBL BOX DOZ GAL TRAY			<input type="checkbox"/>
			↓ BUYER						
			Joe Fish Buyer	SPMAC	50	BU LBS NU BBL BOX DOZ GAL TRAY			<input type="checkbox"/>
			↓ VESSEL ID NO.						
			VA0000AA	CRM	10	BU LBS NU BBL BOX DOZ GAL TRAY			<input type="checkbox"/>
↓ VMRC ID	↓ NAME		↓ VESSEL NAME						
			Miss Virginia	TRO	91	BU LBS NU BBL BOX DOZ GAL TRAY			<input type="checkbox"/>
9876	Mary Fisherman		↓ PUBLIC ROCK ABBR (OYSTERS ONLY)						<input checked="" type="checkbox"/>
			↓ LEASE NUMBER (AQUA. ONLY)						<input type="checkbox"/>
				STB(4TAGS)	55	BU LBS NU BBL BOX DOZ GAL TRAY			<input type="checkbox"/>
			↓ CITY/COUNTY LANDED						<input type="checkbox"/>
			Fisherman County						<input type="checkbox"/>
			↓ DATE (ONE PER TICKET)						<input type="checkbox"/>
			April 12, 2014						<input type="checkbox"/>

Please remember the following when filling out monthly mandatory reports:

OYSTER HARVEST FROM PUBLIC GROUNDS

- Report aquaculture and shellfish harvested from public ground on SEPARATE pages
- Include the rock abbreviation obtained from the provided list of oyster rocks (e.g., BURP) ; do not include the water code number (e.g., 345)
- Report all oysters in bushels

AQUACULTURE PRODUCT OWNERS (PRIVATE)

Mandatory fields to be filled out by aquaculture product owners:

- Report aquaculture and shellfish harvested from public ground on SEPARATE pages
- VMRC ID and full and legal name of the aquaculture product owner
- VMRC ID and the full and legal name of no more five helpers (recommended but not required)
- Number of crew (the number of individuals harvesting)
- Buyer or private sale information (one per summary report)
- Assigned VMRC lease number (one per summary report). If you harvest on the seaside or have riparian rights and do not have a lease number please use 00001 as your lease number (for aquaculture harvest only)
- City or county of landing (one per summary report; use code from the Mandatory Reporting folder)
- Use date of last day of the month (summary report only required)
- Water body fished (recommended but not required)
- Gear type (one per summary report; use code from the Mandatory Reporting folder)
- Species harvested, market category (use code from the Mandatory Reporting folder)
- Live weight
- Unit (bu - oysters; nu - clams)

Important Notes:

- The appropriate aquaculture user fees and permits must be acquired before working on leased grounds. Public ground oyster user fees and permits DO NOT apply to aquaculture activity.
- A no-cost vessel permit is available for oyster or clam aquaculture product owner permittees to transport harvesters without their own individual harvesters permit to harvest oyster or clams from the product owner's leased, subleased, or fee simple ground.

All licenses are effective for one calendar year. 2013 licenses, permits, and user fees expired Dec 31, 2013.

OYSTER HARVEST (PUBLIC GROUNDS)

PRIMARY HARVESTER VMRC ID & NAME		<input type="checkbox"/> CHECK IF AGENT USED	↓AGENT VMRC ID	WATER FISHED	HRS GEAR FISHED	GEAR	GEAR AMOUNT	MAN HOURS	NO. OF CREW
9999			Joseph Fisherman	JRM	7	OT	1	8	2
↓VMRC ID	↓NAME		↓AGENT NAME	↓SPECIES & MARKET CATEGORY	↓AMOUNT	↓UNITS (CIRCLE ONE):			* Check if processed
			↓BUYER	OYSPRNG	10	(BU) LBS NU BBL BOX DOZ GAL TRAY			<input type="checkbox"/>
ADDITIONAL HARVESTERS VMRC ID & NAME(S) LIST ONLY HELPERS WITH VMRC ID			↓VESSEL ID NO.			BU LBS NU BBL BOX DOZ GAL TRAY			<input type="checkbox"/>
↓VMRC ID	↓NAME		↓VESSEL NAME			BU LBS NU BBL BOX DOZ GAL TRAY			<input type="checkbox"/>
			Miss Virginia			BU LBS NU BBL BOX DOZ GAL TRAY			<input type="checkbox"/>
9876	Mary Fisherman		↓PUBLIC ROCK ABBR (OYSTERS ONLY)			BU LBS NU BBL BOX DOZ GAL TRAY			<input type="checkbox"/>
			↓LEASE NUMBER (AQUA. ONLY)			BU LBS NU BBL BOX DOZ GAL TRAY			<input type="checkbox"/>
			↓CITY/COUNTY LANDED			BU LBS NU BBL BOX DOZ GAL TRAY			<input type="checkbox"/>
			Fisherman County			BU LBS NU BBL BOX DOZ GAL TRAY			<input type="checkbox"/>
			↓DATE (ONE PER TICKET)			BU LBS NU BBL BOX DOZ GAL TRAY			<input type="checkbox"/>
			April 11, 2014			BU LBS NU BBL BOX DOZ GAL TRAY			<input type="checkbox"/>

AQUACULTURE PRODUCT OWNERS (OYSTERS FROM PRIVATE GROUNDS) - Summary Report

PRIMARY HARVESTER VMRC ID & NAME		<input type="checkbox"/> CHECK IF AGENT USED	↓AGENT VMRC ID	WATER FISHED	HRS GEAR FISHED	GEAR	GEAR AMOUNT	MAN HOURS	NO. OF CREW
9999			Joseph Fisherman	YRL		BC			3
↓VMRC ID	↓NAME		↓AGENT NAME	↓SPECIES & MARKET CATEGORY	↓AMOUNT	↓UNITS (CIRCLE ONE):			* Check if processed
			↓BUYER	OYSPRIV	1500	(BU) LBS NU BBL BOX DOZ GAL TRAY			<input type="checkbox"/>
ADDITIONAL HARVESTERS VMRC ID & NAME(S) LIST ONLY HELPERS WITH VMRC ID			↓VESSEL ID NO.			BU LBS NU BBL BOX DOZ GAL TRAY			<input type="checkbox"/>
↓VMRC ID	↓NAME		↓VESSEL NAME			BU LBS NU BBL BOX DOZ GAL TRAY			<input type="checkbox"/>
			↓PUBLIC ROCK ABBR (OYSTERS ONLY)			BU LBS NU BBL BOX DOZ GAL TRAY			<input type="checkbox"/>
9876	Mary Fisherman					BU LBS NU BBL BOX DOZ GAL TRAY			<input type="checkbox"/>
9875	Charles Fisherman		↓LEASE NUMBER (AQUA. ONLY)			BU LBS NU BBL BOX DOZ GAL TRAY			<input type="checkbox"/>
			98765			BU LBS NU BBL BOX DOZ GAL TRAY			<input type="checkbox"/>
			↓CITY/COUNTY LANDED			BU LBS NU BBL BOX DOZ GAL TRAY			<input type="checkbox"/>
			Fisherman County			BU LBS NU BBL BOX DOZ GAL TRAY			<input type="checkbox"/>
			↓DATE (ONE PER TICKET)			BU LBS NU BBL BOX DOZ GAL TRAY			<input type="checkbox"/>
			April 30, 2014			BU LBS NU BBL BOX DOZ GAL TRAY			<input type="checkbox"/>

AQUACULTURE PRODUCT OWNERS (CLAMS FROM PRIVATE GROUNDS) - Summary Report

PRIMARY HARVESTER VMRC ID & NAME		<input type="checkbox"/> CHECK IF AGENT USED	↓AGENT VMRC ID	WATER FISHED	HRS GEAR FISHED	GEAR	GEAR AMOUNT	MAN HOURS	NO. OF CREW
9999			Joseph Fisherman	YRL		BUL			3
↓VMRC ID	↓NAME		↓AGENT NAME	↓SPECIES & MARKET CATEGORY	↓AMOUNT	↓UNITS (CIRCLE ONE):			* Check if processed
			↓BUYER	CHEPRIV	20,000	BU LBS (NU) BBL BOX DOZ GAL TRAY			<input type="checkbox"/>
ADDITIONAL HARVESTERS VMRC ID & NAME(S) LIST ONLY HELPERS WITH VMRC ID			↓VESSEL ID NO.	CHDPRIV	10,000	BU LBS (NU) BBL BOX DOZ GAL TRAY			<input type="checkbox"/>
↓VMRC ID	↓NAME		↓VESSEL NAME	LITPRIV	50,000	BU LBS (NU) BBL BOX DOZ GAL TRAY			<input type="checkbox"/>
			↓PUBLIC ROCK ABBR (OYSTERS ONLY)			BU LBS NU BBL BOX DOZ GAL TRAY			<input type="checkbox"/>
9876	Mary Fisherman					BU LBS NU BBL BOX DOZ GAL TRAY			<input type="checkbox"/>
9875	Charles Fisherman		↓LEASE NUMBER (AQUA. ONLY)			BU LBS NU BBL BOX DOZ GAL TRAY			<input type="checkbox"/>
			98764			BU LBS NU BBL BOX DOZ GAL TRAY			<input type="checkbox"/>
			↓CITY/COUNTY LANDED			BU LBS NU BBL BOX DOZ GAL TRAY			<input type="checkbox"/>
			Fisherman County			BU LBS NU BBL BOX DOZ GAL TRAY			<input type="checkbox"/>
			↓DATE (ONE PER TICKET)			BU LBS NU BBL BOX DOZ GAL TRAY			<input type="checkbox"/>
			April 30, 2014			BU LBS NU BBL BOX DOZ GAL TRAY			<input type="checkbox"/>

SEAFOOD LANDING LICENSEES

Mandatory fields to be filled out by Seafood Landing Licensees:

- Seafood landing license number and full and legal name of seafood landing licensee
- Buyer or private sale information (one per ticket)
- Vessel identification (Coast Guard documentation number or VA registration number)
- Name of vessel (if applicable) (one per ticket)
- City or county of landing (one per ticket; use list from Mandatory Reporting folders)
- Date of harvest (one per ticket)
- Water body fished (one per ticket; use codes from Mandatory Reporting folders)
- Number of hours gear fished
- Gear type and amount used (one per ticket; use codes from Mandatory Reporting folders)
- Number of hours the seafood landing licensee fished
- Number of crew on board, including captain
- Species harvested, market category (NON-FEDERALLY PERMITTED SPECIES ONLY) (use codes from Mandatory Reporting folders)
- Live weight or processed weight of species harvested
- Please ensure that separate mandatory reporting forms are used when submitting reports for species caught offshore.

All licenses are effective for one calendar year. 2013 licenses, permits, and user fees expired Dec 31, 2013.

EXAMPLE: SEAFOOD LANDING LICENSEES (OFFSHORE) - FINFISH

PRIMARY HARVESTER VMRC ID & NAME		<input type="checkbox"/> CHECK IF AGENT USED	↓AGENT VMRC ID	WATER FISHED	HRS GEAR FISHED	GEAR	GEAR AMOUNT	MAN HOURS	NO OF CREW
↓VMRC ID	↓NAME		↓AGENT NAME	OSVBA	8	HL	4	9	2
G999	Joseph Fisherman		↓BUYER	↓SPECIES & MARKET CATEGORY	↓AMOUNT	↓UNITS (CIRCLE ONE):			*Check if processed
			Joe Buyer	TTG	20	BU <input checked="" type="radio"/> LBS	NU BBL BOX DOZ GAL TRAY		<input type="checkbox"/>
ADDITIONAL HARVESTERS VMRC ID & NAME(S) LIST ONLY HELPERS WITH VMRC ID			↓VESSEL ID NO.	CRO	80	BU <input checked="" type="radio"/> LBS	NU BBL BOX DOZ GAL TRAY		<input type="checkbox"/>
↓VMRC ID	↓NAME		↓VESSEL NAME	BFL	50	BU <input checked="" type="radio"/> LBS	NU BBL BOX DOZ GAL TRAY		<input type="checkbox"/>
9876	Mary Fisherman		↓PUBLIC ROCK ABBR (OYSTERS ONLY)	TILE	25	BU <input checked="" type="radio"/> LBS	NU BBL BOX DOZ GAL TRAY		<input type="checkbox"/>
			↓LEASE NUMBER (AQUA. ONLY)			BU LBS NU BBL BOX DOZ GAL TRAY			<input type="checkbox"/>
			↓CITY/COUNTY LANDED			BU LBS NU BBL BOX DOZ GAL TRAY			<input type="checkbox"/>
			Fisherman County			BU LBS NU BBL BOX DOZ GAL TRAY			<input type="checkbox"/>
			↓DATE (ONE PER TICKET)			BU LBS NU BBL BOX DOZ GAL TRAY			<input type="checkbox"/>
			April 12, 2014						

Please ensure that all fields are correctly filled out prior to submitting your mandatory reports. For questions about how to fill out mandatory reports please call 757-247-8102.

NON-COMPLIANCE

The automated compliance notification process has been in place since 2010. Based on a harvester's reporting history, this notification process automatically generates postcards which will serve as reminders for submitting mandatory reports.

Details for the notification process are outlined below:

- If a mandatory report is not submitted by the 5th of the following month, then a **1st notification** 4"x6" postcard will be generated and mailed to the harvester.
- If a mandatory report is not submitted 2 weeks (14 days) after the 1st notification, then a **2nd notification** 4"x6" postcard will be generated and mailed out to the harvester.
- If a mandatory report is not submitted 2 weeks (14 days) after the 2nd notification postcard, then a 8½"x11" **'certified' letter** will be generated and mailed out to the harvester
- If a mandatory report is not submitted 5 days after the issue date on the certified letter, then the harvester who has not responded may receive a **'service letter'** delivered by a Marine Police Officer (MPO) to appear before the Commission for a non-compliance hearing.

PLEASE REMEMBER YOU MUST REPORT BY THE 5TH OF THE FOLLOWING MONTH EVEN IF YOU HAVE NOT HARVESTED (NO ACTIVITY)!



EXAMPLE: FIRST NOTIFICATION POSTCARD

TOM FISHERMAN

March 7, 2014

PO BOX 1234

AQUAVILLE, VA 22222

MRC ID: ####

Dear Tom Fisherman,

This letter serves as your FIRST notification by the Virginia Marine Resources Commission (VMRC) that your monthly mandatory harvest reports, required by Regulation 4 VAC 20-610-10 et seq., are currently incomplete. As of March 7, 2013, our records indicate that you have not submitted a report for June 2013. If you need to report 'no activity' for June 2013, please call 1-800-937-9247 and leave a message on our automated voice mail system. If you did harvest seafood and have not submitted your reports, please do so by March 21, 2014. If your monthly reporting records are in error, please contact Mandatory Reporting at 757-247-2241, as soon as possible, between the hours of 8:30 am and 4:00 pm Monday through Thursday, and between the hours of 8:30 am and 2:00 pm Friday.

VMRC – Virginia Marine Resources Commission – Meetings are set for the 4th Tuesday of each month. Meetings begin at 9:30am, (fisheries items begin at 12:00 noon), and are held at the Commission’s main office in Newport News.

ASMFC – Atlantic States Marine Fisheries Commission – Please visit <http://www.asmfmc.org> or call (703) 842-0740 to find out meeting dates, locations, and times.

MAFMC – Mid-Atlantic Fishery Management Council – Please visit <http://mafmc.org> or call (302) 674-2331 for meeting dates, locations and times.

CMAC – Crab Management Advisory Committee – Meeting dates vary. Please refer to VMRC website calendar for meeting updates.

<http://mrc.virginia.gov/calendar.shtm>

FMAC – Finfish Management Advisory Committee – Meeting dates vary. Please refer to VMRC website calendar for meeting updates.

<http://mrc.virginia.gov/calendar.shtm>

CFAB – Commercial Fishery Advisory Board – Contact Alicia Nelson (757) 247-8155 for information.

As a reminder, VMRC office hours are 8AM-5PM Monday-Thursday, and 8AM-2:30PM Friday.



PRSRRT STD
US POSTAGE
PAID
NORFOLK, VA
PERMIT NO 2217

COMMONWEALTH OF VIRGINIA
MARINE RESOURCES COMMISSION
ADDRESS CORRECTION REQUESTED